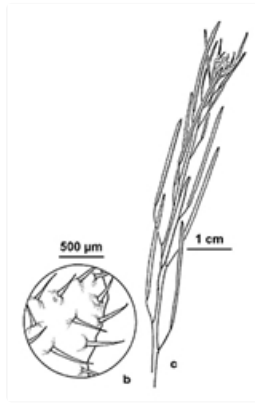


Plants of South Eastern New South Wales



Flowering plant. Photographer Don Wood, Batehaven, south of Batemans Bay



Line drawing. b. leaf hairs; c. inflorescence. MMBir, National Herbarium of Victoria, © 2021 Royal Botanic Gardens Board

Common name

Common Bittercress, Hairy Woodcress

Family

Brassicaceae

Where found

Widespread weed in moist garden situations, including paving cracks and **lawns**; also elsewhere in moist **habitats**. Native of Europe. Sydney area and the ACT. Sporadic elsewhere.

Notes

Introduced slender **annual** herb to 0.35 m high, with a taproot, branched. Sparsely hairy to hairless. Basal leaves **compound**, usually 2-8 cm long, with 3-15 leaflets, margins fringed to sparsely fringed. Stem leaves 0-5 and becoming smaller in size up the stem, 1-8 cm long, with 3-7 leaflets, margins fringed to sparsely fringed. Flowers with 4 **petals**, each 3-4 mm long, white. **Stamens** usually 4. Flowers in clusters, usually many-flowered. Flowers all year.

PlantNET description: <http://plantnet.rbgsyd.nsw.gov.au/cgi-bin/NSWfl.pl?page=nswfl&lvl=sp&name=Cardamine~hirsuta> (accessed 7 January, 2021)

Author: Betty Wood.

This identification key and fact sheets are available as a free mobile application:



Android edition



iOS edition

Creative Commons Attribution 3.0 Australia (CC BY)