

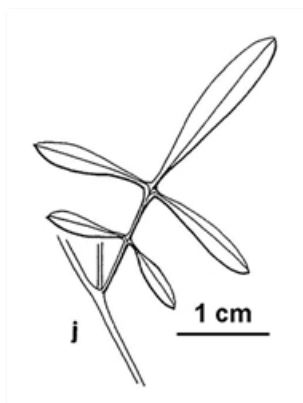
Plants of South Eastern New South Wales



Flowering plant. Photographer Don Wood, Coolumboka Nature Reserve near Bombala



Flowering plant. Photographer Don Wood, Namadji National Park, ACT



Line drawing. j. stem leaf. M.Moir, National Herbarium of Victoria, © 2021 Royal Botanic Gardens Board

Common name

Annual Bittercress

Family

Brassicaceae

Where found

Moist **forest** and along streams, and other **habitats** near permanent or seasonally wet areas. Widespread.

Notes

Annual or possibly **perennial** herb to 0.4 m high, **erect** or sprawling, taprooted, sometimes also with fibrous roots. Hairless, occasionally hairy. Leaves 2-12 cm long, basal and **alternating** up the stems, **compound**, with 3-11 leaflets. Leaflets variable from kidney shaped or oval to **linear**, the **terminal** leaflet the largest and sometimes lobed. Flowers with 4 **petals** each 3-6 mm long, white or rarely pink. **Stamens** 6. **Sepals** sometimes with white margins. Flowers in few to many-flowered clusters. Flowers Spring to Autumn.

Vulnerable Vic.

PlantNET description: <http://plantnet.rbgsyd.nsw.gov.au/cgi-bin/NSWfl.pl?page=nswfl&lvl=sp&name=Cardamine~paucijuga> (accessed 7 January, 2021)

Author: Betty Wood.

This identification key and fact sheets are available as a free mobile application:



Android edition



iOS edition

Creative Commons Attribution 3.0 Australia (CC BY)