

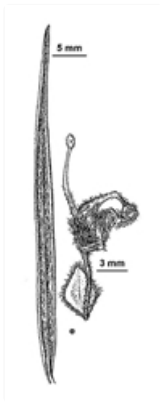
Plants of South Eastern New South Wales



Flower clusters and leaves. Australian Plant Image Index, photographer Murray Fagg, Australian National Botanic Gardens, Canberra, ACT



Shrub. Australian Plant Image Index, photographer M Parkes, unknown place



Line drawings. e. leaves (undersurface view); flowers (longitudinal section). G. Thornlinson, National Herbarium of Victoria, © 2021 Royal Botanic Gardens Board

Common name

Crimson grevillea

Family

Proteaceae

Where found

Dry shrubby open **forest**. Western Slopes and Kosciuszko National Park. Tablelands north of the Hume Highway.

Notes

Shrub to 1.8 m high. Leaves **alternating** up the stems, 2–7.5 cm long, 1–6 mm wide, upper surface becoming hairless and granular, margins **entire** and rolled down, sometimes obscuring the hairy lower surface. Flowers with 4 '**petals**' joined together in pairs, '**petals**' red to pink with yellow or green near the tips, hairy outside, **bearded** usually above the middle inside. **Gynoeceium** 9.5–14 mm long; **style** pink to red or orange, hairy at the base, more sparsely hairy above. Flower clusters curved down, almost round. **Bracts** at the base of the individual flower stalks conspicuous at the late bud stage and diagnostic, 2.5–7 mm long, 2–5.5 mm wide, usually still present when the flowers open and more persistent towards the base of the flower clusters. Flowering: spring-summer.

In the absence of specific information, seeds of all species of *Grevillea* have been keyed as having one **wing**.

Rare Vic.

PlantNET description: <http://plantnet.rbgsyd.nsw.gov.au/cgi-bin/NSWfl.pl?page=nswfl&lvl=sp&name=Grevillea-polybractea> (accessed 19 January, 2021)

Author: Betty Wood.

This identification key and fact sheets are available as a free mobile application:



Creative Commons Attribution 3.0 Australia (CC BY)



Android edition



iOS edition