

Plants of South Eastern New South Wales



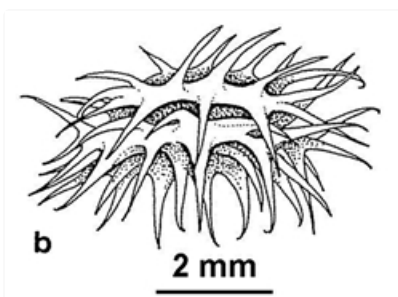
Flowers and leaves. Wikipedia, unknown photographer, Germany



Plant with burrs. Australian Plant Image Index, photographer Murray Fagg, Yalgoo



Burrs. Photographer Jackie Miles, Adamina Bay



Line drawing of burr. MMBir, National Herbarium of Victoria, © 2021 Royal Botanic Gardens Board

Common name

Woolly burr medic, Small woolly burr medic, Little medic

Family

Fabaceae

Where found

Grassy areas, disturbed sites, roadsides, and along streams. Mainly Sydney area and the ACT. Sporadic elsewhere.

Notes

Introduced annual herb, **prostrate** to **erect**, branches to 0.9 m long. Seed cases spiny. Stems hairy, often sticky. Leaves **alternating** along the stems, **compound**, with three leaflets each 0.3-1.5 cm long, 2-10 mm wide, upper surface sometimes with darker flecks, densely hairy when young, sometimes sticky, margins **entire** or toothed, tips notched or rounded, and with a small straight point, **stipules** entire or with minute teeth. Flowers yellow, pea shaped, with 5 **petals**, 2 joined together to form the **keel**. **Standard** petal 3.5-5 mm long. Flowers in clusters of 1-8 flowers. Flowers Jul.-Jan.

PlantNET description: <http://plantnet.rbgsyd.nsw.gov.au/cgi-bin/NSWfl.pl?page=nswfl&lvl=sp&name=Medicago~minima> (accessed 24 January, 2021)

Author: Betty Wood.

This identification key and fact sheets are available as a free mobile application:



Creative Commons Attribution 3.0 Australia (CC BY)



Android edition



iOS edition