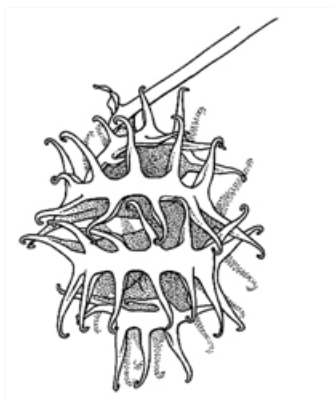


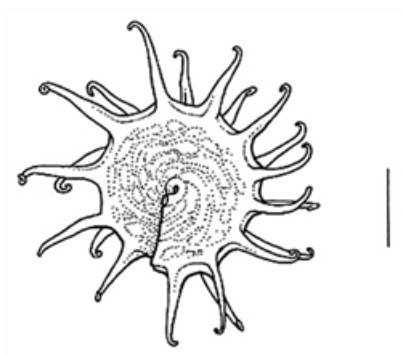
Plants of South Eastern New South Wales



Leaves and burrs on stem. Photographer
ninjatacoshell, unknown place



Burr. Line drawing from Manual of the Alien Plants of
Belgium, National Botanic Garden of Belgium



Section through burr. Line drawing from Manual of
the Alien Plants of Belgium, National Botanic Garden
of Belgium

Common name

Small-leaved Burr Medic

Family

Fabaceae

Where found

Weed. Sydney and Canberra. Occasionally on the tablelands and Western Slopes.

Notes

Introduced annual herb, to 0.5 m tall or sprawling. Burrs with many hooked spines. Stems more or less hairy. Leaves **alternating** along the stems, **compound**, with 3 leaflets each 0.2-1.2 cm long, 2-13 mm wide, usually hairless on the upper surface, hairy below, margins toothed towards the tip, tips blunt with a small point, **stipules** deeply **incised**, hairy on lower surface. Flowers yellow, pea-shaped, with 5 **petals**, 2 almost joined together to form the **keel**, the **standard** petal 2-3 mm long. Flowers single or in pairs.

PlantNET description: <http://plantnet.rbgsyd.nsw.gov.au/cgi-bin/NSWfl.pl?page=nswfl&lvl=sp&name=Medicago-praecox> (accessed 24 January, 2021)

Author: Betty Wood.

This identification key and fact sheets are available as a free mobile application:



Creative Commons Attribution 3.0 Australia (CC BY)



Android edition



iOS edition