

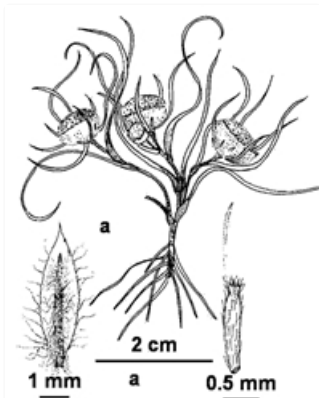
Plants of South Eastern New South Wales



Flowers and leaves. Australian Plant Image Index, Photographer Murray Fagg, near Barmedan, NE of Temora, NSW



Flowering plants. Australian Plant Image Index, Photographer Murray Fagg, near Barmedan, NE of Temora, NSW



Line drawings. a. plant; outer bract; seed. E Mayfield, National Herbarium of Victoria, © 2021 Royal Botanic Gardens Board

Common name

Woolly Heads

Family

Asteraceae

Where found

Mallee in damp low lying situations. Seasonally moist flats. Western Slopes.

Notes

Annual grass-like herb, **prostrate** or to 0.1 m tall. Leaves **alternating** along the stems, appearing basal, mostly 2-8 cm long, about 1 mm wide, **linear, erect**, tips pointed, more or less sheathing at the base, surfaces hairless, bright green, margins thickened. Flower **heads** greenish white with a yellow centre, 9–16 mm in diameter, **compound**, broadly hemispherical, with 0 **petals**, composed of many minute partial flower heads each with 1-2 **florets**. Flower heads single.

PlantNET description: <http://plantnet.rbgsyd.nsw.gov.au/cgi-bin/NSWfl.pl?page=nswfl&lvl=sp&name=Myriocephalus~rhizocephalus> (accessed 12 January, 2021)

Author: Betty Wood.

This identification key and fact sheets are available as a free mobile application:



Android edition



iOS edition

Creative Commons Attribution 3.0 Australia (CC BY)