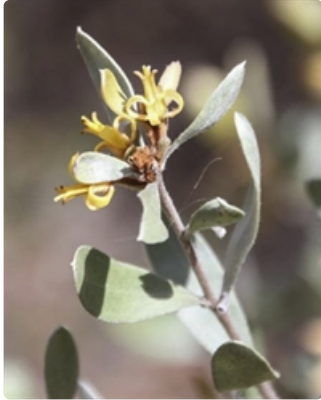


# Plants of South Eastern New South Wales



Flowering stem. Photographer Ian McMaster, Illig Nature Reserve north of Coonabarabran



Flowering branches. Photographer Don Wood, Carnarvon Station Bush Heritage Reserve via Augathella, Qld

## Common name

A geebung

## Family

Proteaceae

## Where found

Dry **forest** and **woodland**. Mostly west of the Olympic Highway. Rarely tablelands and ranges farther east.

## Notes

**Shrub** to 4 m tall, hairs silvery or greyish to rusty. Fruit fleshy. Bark smooth or poorly developed. Young branchlets moderately to densely hairy. Leaves **alternating** up the stems, 1.5–6 cm long, 2–21 mm wide, sometimes spoon-shaped, twisted at the base through 0–90°, flat, margins sometimes curved down, sometimes curved upwards, surfaces the same colour to very different colours, moderately to densely hairy when young, and more or less rough with minute projections. Flowers with 4 yellow '**petals**' each 9–11 mm long, more or less fused at the base, moderately to densely hairy. Flowers **erect** to curved down, **subtended** by scale leaves and leaves, in 1–23-flowered clusters. Flowers Oct.–June.

Hybridises sporadically with *Persoonia linearis* and with *Persoonia rigida*.

Protected NSW.

PlantNET description: <http://plantnet.rbgsyd.nsw.gov.au/cgi-bin/NSWfl.pl?page=nswfl&lvl=sp&name=Persoonia-sericea> (accessed 31 January, 2021)

Author: Betty Wood.

This identification key and fact sheets are available as a free mobile application:



Android edition



iOS edition

Creative Commons Attribution 3.0 Australia (CC BY)