

# Plants of South Eastern New South Wales



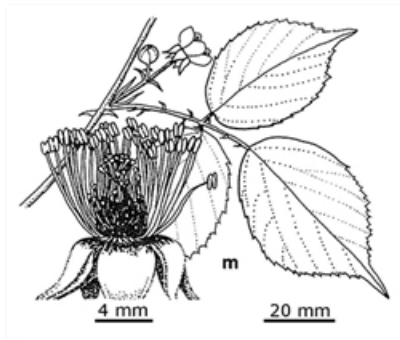
Flower. Photographer Steve Burrows, Nadgee Nature Reserve south of Eden.



Flowering branches. Photographer Steve Burrows, Nadgee Nature Reserve south of Eden.



Leaves on stems. Photographer Steve Burrows, Nadgee Nature Reserve south of Eden.



Line drawings (as *Rubus chloocladus*). m flowering stem; flower section. EMMayfield, National Herbarium of Victoria, © 2021 Royal Botanic Gardens Board

## Common name

Blackberry

## Family

Rosaceae

## Where found

**Forest, woodland**, grasslands, pastures, disturbed sites, roadsides, gardens, orchards, plantations, along streams and near swamps. Widespread, but coastal only south from Eden. No records from the Western Slopes west of the Hume Highway.

## Notes

**Introduced spreading** or trailing, sometimes arching, semi-**deciduous shrub** to 3 m high. Sometimes **scrambling**. Produces roots at the stem tips and suckers from the base. Forms dense thickets. Prickles to about 10 mm long on stems (mainly on the angles), leaf stalks, sometimes on the lower surfaces of the leaves, and sometimes on the **sepals**. Leaf margins sharply toothed. Fruit fleshy. Stems angled, hairy, and sometimes with long-stalked, reddish, **glandular** hairs. Leaves **alternating** up the stems, **compound**, with 3 or 5 leaflets, sometimes some joined, sometimes leaves on the stems that produce flowers with only 1 or 2 leaflets. Leaflets mostly 4–9.5 cm long, 30–80 mm wide, bases wedge-shaped to **cordate**, upper surface green, becoming hairless, lower surface varying from not **felted** to felted grey-green and with few to many longer hairs. Flowers pink or white, with 5 **petals** each 11–19 mm long, broad elliptic to nearly round, usually crumpled. Flowers in clusters. Axis of the flower clusters hairy, but the hairs are not dense and **erect**. Flowering mainly late spring and summer. Fruit more or less round, initially green, ripening red, maturing black, about 15 mm in diameter.

One of the species in the ***Rubus fruticosus* species aggregate**.

A Weed of National Significance. General Biosecurity Duty with additional restrictions all NSW. Pest plant ACT. Noxious weed Vic.

PlantNET description: <http://plantnet.rbgsyd.nsw.gov.au/cgi-bin/NSWfl.pl?page=nswfl&lvl=sp&name=Rubus-leucostachys> (accessed 5 February, 2021)

---

*Author: Betty Wood.*



*Creative Commons Attribution 3.0 Australia (CC BY)*

*This identification key and fact sheets are available as a free mobile application:*



*Android edition*



*iOS edition*