

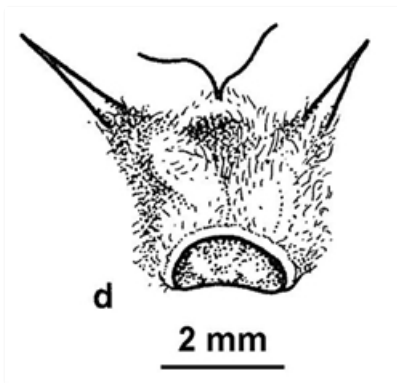
Plants of South Eastern New South Wales



Burrs and leaves. Photographer Don Wood, Scotia Sanctuary, western NSW



Plant. Photographer Don Wood, Scotia Sanctuary, western NSW



Line drawing, d. burr. MMBir, M., National Herbarium of Victoria, © 2021 Royal Botanic Gardens Board

Common name

Grey Copperburr

Family

Chenopodiaceae

Where found

Woodland, mallee, shrubland, grassy areas, and bare ground. Western Slopes.

Notes

Shrub or **perennial** herb to about 0.30 m tall or sprawling to **prostrate**. Leaves usually fleshy. Branches densely shortly **woolly**. Leaves **alternating** up the stems, 0.5 to about 2.5 cm long, **linear**, flattened narrow cylindrical, **appressed** hairy. Flowers tiny (less than 3mm in diameter), cup-shaped, with 3-5 lobes, single. Burrs sparsely to densely hairy, with 2 spines, rarely a short third spine developed adjacent to one of the others.

PlantNET description: <http://plantnet.rbgsyd.nsw.gov.au/cgi-bin/NSWfl.pl?page=nswfl&lvl=sp&name=Sclerolaena~diacantha> (accessed 6 February, 2021)

Author: Betty Wood.

This identification key and fact sheets are available as a free mobile application:



Android edition



iOS edition

Creative Commons Attribution 3.0 Australia (CC BY)