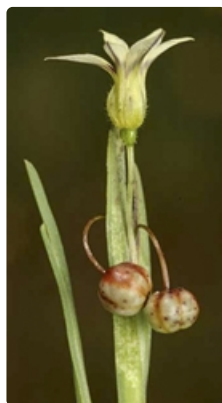


Plants of South Eastern New South Wales



Flowering stem. Photographer Jackie Mies



Flower and seed cases. Australian Plant Image Index, photographer Murray Fagg, Mulligans Flat, ACT



Flowering plant. Photographer Don Wood, north of Bega

Common name

Scourweed

Family

Iridaceae

Where found

Variety of **habitats**. Pastures, roadsides, disturbed areas, and poorly drained sites. Coast, ranges, tablelands, and ACT. Rarely elsewhere.

Notes

Introduced annual herb to 0.2 m high, usually densely tufted. Stem unbranched or branched, jointed, slightly compressed, **winged**, 2-angled. Leaves basal and **alternating** up the stems, 2–6 cm long, 1–3 mm wide. Flowers either pale yellow with brown-purple markings in the centre, with purplish markings down the middle on the outside, or pinkish to pale lavender or mauve with a yellowish throat and darker purplish markings, about 7.5 mm long, 5–7 mm in diameter, with 6 '**petals**', free from each other almost to the base, **spreading** widely. Flowers single or in small clusters. Flowers Oct.–Mar.

Was *Sisyrinchium* sp. **A**.

PlantNET description: <http://plantnet.rbgsyd.nsw.gov.au/cgi-bin/NSWfl.pl?page=nswf1&lvl=sp&name=Sisyrinchium~rosulatum> (accessed 30 January, 2021)

Author: Betty Wood.

This identification key and fact sheets are available as a free mobile application:



Android edition



iOS edition

Creative Commons Attribution 3.0 Australia (CC BY)