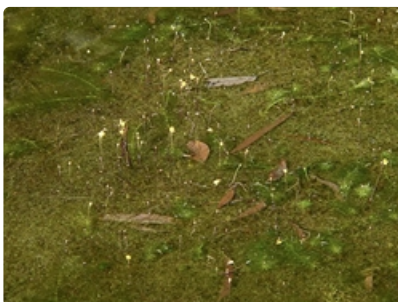


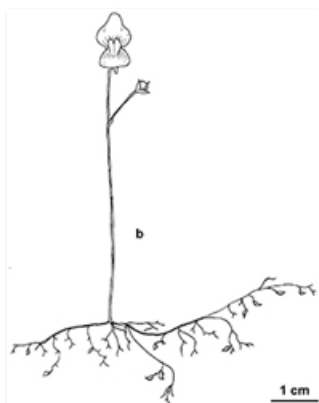
# Plants of South Eastern New South Wales



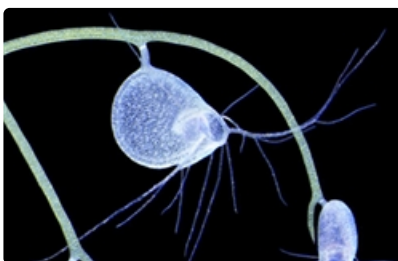
Flower. Australian Plant Image Index, photographer Kevin Thiele, WA



Flowering stems. Photographer Jackie Miles



Line drawings. b. plant. S Clark, National Herbarium of Victoria, © 2021 Royal Botanic Gardens Board



Traps on stems. Photographer Clarke, Ian, C., © 2021 Royal Botanic Gardens Board

## Common name

Floating Bladderwort

## Family

Lentibulariaceae

## Where found

In shallow still or slow-flowing water, in pools, swamps, and marshes. Mainly coast and the eastern edge of the ranges north from Tahmoor. Occasionally coastal farther south.

## Notes

**Annual** or **perennial** herb with branched threadlike stems to about 0.2 m long, **stoloniferous**. Insect traps on the stems. Leaves **alternating** up the stems, 0.5–1.5 cm long, divided from the base into 2 approximately equal threadlike **segments**, these again sparsely divided into 4, rarely into 8 **ultimate** segments. Leaves rarely undivided. Flowers yellow, often with reddish-brown lines, 4–25 mm long, 2-lipped, the upper lip broadly oval to almost round, the lower lip slightly smaller, round to transversely elliptic, with a 2-lobed basal swelling. Flowers in a single cluster of 1–12 flowers, or 2 or more clusters arising together or in succession. Clusters **erect**, mostly 1–20 cm long, usually above the water. Flowers Nov.–Jun.

Vulnerable Vic.

PlantNET description: <http://plantnet.rbgsyd.nsw.gov.au/cgi-bin/NSWfl.pl?page=nswfl&lvl=sp&name=Utricularia~gibba> (accessed 10 February, 2021)

Author: Betty Wood.

This identification key and fact sheets are available as a free mobile application:



Android edition



iOS edition

Creative Commons Attribution 3.0 Australia (CC BY)