

Bolbitis quoyana

Family:

Dryopteridaceae

Botanical name

Bolbitis quoyana (Gaudich.) Ching

Link to Australian Plant Name Index for publication details and synonyms:

<https://id.biodiversity.org.au/name/apni/116297>

Description

Rhizome short-creeping; scales narrowly ovate with narrowly acute apices. Fronds erect, 30–120 cm long, dark green to dark bluish green. Stipe 15–50 cm long, scaly. Lamina 1-pinnate, with a pinnatifid apex. Pinnae of sterile fronds attached by stalks only except for 1 or 2 pairs immediately below the apex, 8–20 cm long, 2–4 cm wide; longest pinnae towards the base; margins shallowly to deeply lobed. Fertile laminae with smaller narrower paler pinnae and a longer stipe. Veins anastomosing, with several series of areoles on each side of a pinna midrib.

Distribution

Occurs in NE QLD from Lockerbie Scrub Cape York Peninsula to Johnstone River in the Wet Tropics. Also in Malesia and Polynesia.

Habit and habitat

Terrestrial in low altitude rainforest, usually in wet areas such as creek banks.

Natural history

Produces small plantlets adventitiously from the frond apex where it touches the ground.

Cultivation

Readily grown in a container of moisture retentive mix or in the ground in a tropical or subtropical fernery or shaded part of the garden. The proliferous frond tips enable a colony to spread in moist places.

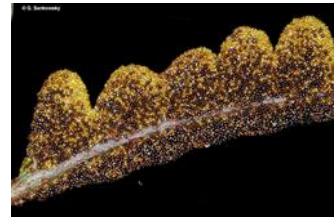
Similar species

Similar to *Bolbitis taylori* from which it may be distinguished by its more complex venation pattern (several series of areoles on either side of midrib, cf. only 1–2 series in *B. taylori*) and by its stalked pinnae (cf. broad decurrent pinna bases in *B. taylori*).

Citation of Australian Tropical Ferns and Lycophytes

Field AR, Quinn CJ, Zich FA (2022) Australian Tropical Ferns and Lycophytes. apps.lucidcentral.org/fern/text/intro/index.htm (accessed online INSERT DATE).

Field AR, Quinn CJ, Zich FA (2022) '*Platynerium superbum*', in Australian Tropical Ferns and Lycophytes. apps.lucidcentral.org/fern/text/entities/platynerium_superbum.htm (accessed online INSERT DATE).



Close up of frond showing sori.
© G. Sankowsky



Close up of frond showing sori.
© G. Sankowsky



Close up of frond showing upper (adaxial) side. © G. Sankowsky



Habit. © CSIRO



Habit. © CSIRO



Bulbil. © G. Sankowsky



Web edition hosted at <https://apps.lucidcentral.org/ferns>