

# *Taenitis pinnata*

## Family:

Pteridaceae

## Botanical name

*Taenitis pinnata* (J.Sm.) Holttum

Link to Australian Plant Name Index for publication details and synonyms:

<https://id.biodiversity.org.au/name/apni/66273>

## Description

Rhizome short-creeping, c. 4 mm diam. Fronds to c. 80 cm long. Stipes to 70 cm long, closely spaced, in 2 ranks, often 1 cm or less apart. Lamina simple when young, 1-pinnate when mature. Pinnae very variable in number and width, thin, the edges crisped when dry, usually 2–4 (–7) pairs, c. 15–20 cm long, stalked except for 1 or 2 pairs of upper pinnae which may be broadly attached and decurrent along the main rachis; terminal pinna longer; sterile pinnae commonly 1–3 cm wide; fertile pinnae not or only slightly narrower (fronds with simple laminas sometimes fertile). Sori spreading intermittently along individual veins almost from midrib to margin, rarely on all sides of an areole; paraphyses with distal cells not much shorter than the basal ones.

## Distribution

Occurs in the tropical north of WA and NT and from Cape York to Shoalwater Bay in QLD. Also in Melanesia and Pacific Islands.

## Habit and habitat

Terrestrial in swamp rainforest with a closed canopy or in riparian rainforest near freshwater streams.

## Cultivation

Readily cultivated in a greenhouse or garden in a tropical climate. Grows well in a container or tub of moist free draining growing medium. May be difficult to transplant.

## Similar species

Key to Australian *Taenitis* spp.:

1a. Sori a continuous elongate medial line parallel to the midrib = *Taenitis blechnoides* (In Australia known only from Cape York Peninsula and NT)

1b. Sori discontinuous along lateral veins = *Taenitis pinnata*

## Citation of Australian Tropical Ferns and Lycophytes

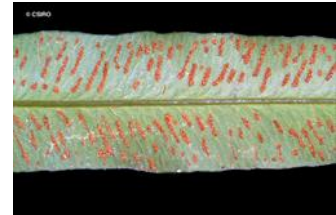
Field AR, Quinn CJ, Zich FA (2022) Australian Tropical Ferns and Lycophytes. [apps.lucidcentral.org/fern/text/intro/index.htm](https://apps.lucidcentral.org/fern/text/intro/index.htm) (accessed online INSERT DATE).

Field AR, Quinn CJ, Zich FA (2022) '*Platyserium superbum*', in Australian Tropical Ferns and Lycophytes. [apps.lucidcentral.org/fern/text/entities/platyserium\\_superbum.htm](https://apps.lucidcentral.org/fern/text/entities/platyserium_superbum.htm) (accessed online INSERT DATE).



Close up of frond showing sori.

© G. Sankowsky



Close up of frond showing sori.

© CSIRO



Close up of frond showing sori.

© G. Sankowsky



Habit. © CSIRO



Habit. © G. Sankowsky

Copyright © Australian Tropical Herbarium 2022, all rights reserved.



Web edition hosted at <https://apps.lucidcentral.org/ferns>