

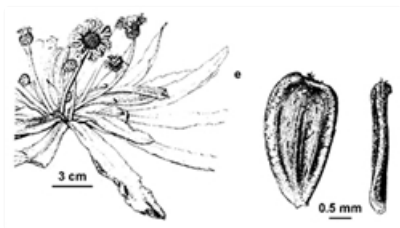
Plants of South Eastern New South Wales



Flowering plants. Photographer Don Wood, Coolumboka Nature Reserve near Bombala



Flowering plant. Photographer Don Wood, Namadji National Park, ACT



Line drawings. e. flowering branch; seed (front and side view). Gloria Thomson, Daisy Study Group, © 2021 Royal Botanic Gardens Board, Melbourne, Vic

Common name

Field daisy

Family

Asteraceae

Where found

Woodland, heath, **grassland**, alpine **herbfields**, and swamps. Widespread south from the Goulburn district. Occasionally elsewhere.

Notes

Perennial herb to 0.30 m high, more or less hairless. Leaves basal, forming an **ascending rosette**, 2-19 cm long, 5-37 mm wide, hairless, margins **entire** or the upper half toothed, tips pointed. Flower **heads** with about 40-45 '**petals**' 5-11 mm long, white, or white above, mauve to purple below, or pale blue to mauve. Yellow centres 10-20 mm in diameter. **Bracts appressed** to the flower heads about 25. Flowering: Sept.-Mar.

Definite identification of most species of *Brachyscome* depends on microscopic examination of the seeds.

All native plants on unleased land in the ACT are protected.

PlantNET description: <http://plantnet.rbgsyd.nsw.gov.au/cgi-bin/NSWfl.pl?page=nswfl&lvl=sp&name=Brachyscome~decipiens> (accessed 6 January, 2020)

Description partly based on: Short, P.S. (2014), A taxonomic review of *Brachyscome* Cass. s.lat. (Asteraceae: Astereae), including description of a new genus, *Roebuckia*, new species and new infraspecific taxa. *Journal of the Adelaide Botanic Gardens* 28: 80-82

Author: Betty Wood.



Creative Commons Attribution 3.0 Australia (CC BY)

This identification key and fact sheets are available as a free mobile application:



Android edition



iOS edition