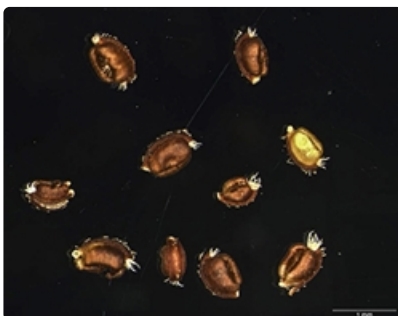


Plants of South Eastern New South Wales



Plant. Photographer Neville Walsh, © 2021 Royal Botanic Gardens Board, Melbourne, Vic



Seeds. Photographer Robert Hare, © 2021 Royal Botanic Gardens Board, Melbourne, Vic

Common name

Claypan Daisy, Mueller Daisy

Family

Asteraceae

Where found

Swampy dry **forest**, **grassland**, damp depressions, lagoon and claypan margins in mud or water, and flood plains. Western Slopes.

Notes

Annual herb to 0.2 m high. Mostly hairless. Leaves basal and **alternating** up the stems, 1–7 cm long, 1–15 mm wide, margins **entire** or with 1 or 2 threadlike lobes, tips pointed. Flower **heads** with white '**petals**' 2–4.5 mm long, and yellow centres. 8–10 **bracts** **appressed** to the flower heads. Flower heads single. Flowering September–November.

Definite identification of most species of *Brachyscome* depends on microscopic examination of the seeds.

Vulnerable Australia. Vulnerable NSW. Provisions of the Biodiversity Conservation Act 2016 No 63 relating to the protection of protected plants generally also apply to plants that are a threatened species.

Endangered Vic. Listed in the Flora and Fauna Guarantee Act, Vic.

NSW Threatened Species profile: <http://www.environment.nsw.gov.au/threatenedSpeciesApp/profile.aspx?id=10107> (accessed 4 January, 2021)

PlantNET description: <http://plantnet.rbgsyd.nsw.gov.au/cgi-bin/NSWfl.pl?page=nswfl&lvl=sp&name=Brachyscome~muelleroides> (accessed 4 January, 2021)

Author: Betty Wood.

This identification key and fact sheets are available as a free mobile application:



Creative Commons Attribution 3.0 Australia (CC BY)