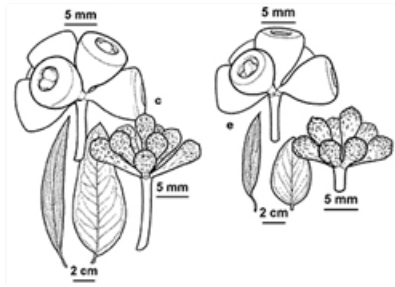


# Plants of South Eastern New South Wales



Flower buds and leaves. Photographer Jackie Mies



Line drawings. c. (subsp. *pauciflora*) juvenile (right) and adult (left) leaves; bud and gumnut. e. (subsp. *niphophila*) juvenile (right) and adult (left) leaves; bud and gumnut. KR Thiele, Australian National Herbarium, © 2021 Royal Botanic Gardens Board, Melbourne, Vic



Bark. Australian Plant Image Index, photographer Murray Fagg, Narradgi National Park



Trees (subsp. *debeuzevillei*) Australian Plant Image Index, photographer Murray Fagg, M Gingera, Narradgi National Park, ACT



Trees (subsp. *niphophila*). Australian Plant Image Index, photographers Brooker & Kleinig, Kosciuszko National Park



Tree (subsp. *pauciflora*) Photographer Alex Watt, Burra south of Queanbeyan

## Common name

Snow gum

Jounama snow gum (subsp. *debeuzevillei*)

Cabbage gum, White sally (subsp. *pauciflora*)

## Family

Myrtaceae

## Where found

subsp. *debeuzevillei*: Woodland and **herbfield**. Kosciuszko National Park, the mountains to the north, and ACT. Rarely elsewhere.

subsp. *niphophila*: **Woodland**. Restricted to the highest altitudes suitable for tree growth. Kosciuszko National Park and nearby, extending north to Bimberi. and the western edge of the ACT.

subsp. *pauciflora*: Woodland. Kosciuszko National Park, the mountains to the north, ACT, Western Slopes east and south of the Hume Highway, tablelands, and ranges.

## Notes

Tree to 30 m tall, or **mallee**. Bark smooth, shedding in ribbons, usually with scribbles. Branchlets **glaucous** or non-glaucous. Juvenile branchlets rounded or square in cross section, glaucous or non-glaucous, warty or smooth. Juvenile leaves opposite each other for several pairs and then **alternating** up the stems, 4.4-17 cm long, 15-85 mm wide, stalkless or almost stalkless at first, then stalked, dull, blue-green, or glaucous. **Adult** leaves alternating up the stems, 5-20 cm long, 12-50 mm wide, glossy, green, grey-green, or olive-green. Flowers white, with 0 **petals**. Flower clusters 5-15 flowered, rarely to 49-flowered. Mature flower buds 4-12 mm long, caps shorter than the base. Flowers Spring-Autumn. Gumnuts 5-12 mm in diameter. Gumnuts that have dropped their seed have **valves** that are not very noticeable.

**subsp. *debeuzevillei*** Tree or mallee to 10 m tall, sometimes to 15 m. Adult leaves 7.5-18 cm long, 16-50 mm wide. Buds 8-12 mm long, strongly angled, caps conical. Gumnuts 7-12 mm wide.

*Eucalyptus debeuzevillei* in PlantNET.

All native plants on unleased land in the ACT are protected.

Rare Vic.

PlantNET description: <http://plantnet.rbgsyd.nsw.gov.au/cgi-bin/NSWfl.pl?page=nswf&lvl=sp&name=Eucalyptus-debeuzevillei> (accessed 1 May, 2021)

EUCLID description:

[https://apps.lucidcentral.org/euclid/text/entities/eucalyptus\\_pauciflora\\_subsp\\_debeuzevillei.htm](https://apps.lucidcentral.org/euclid/text/entities/eucalyptus_pauciflora_subsp_debeuzevillei.htm) (accessed 1 May, 2021)

**subsp. *niphophila***: Tree or mallee to 10 m tall, but often less than 5 m. Branchlets, **juvenile** leaves, flower buds and gumnuts usually strongly glaucous and copiously waxy. Differs from the other subspecies by the more delicate, stalked, buds, and smaller leaves. Adult leaves 5-10 cm long, 12-30 mm wide. Buds 4-8 mm long, Gumnuts 6-10 mm wide.

*Eucalyptus niphophila* in PlantNET.

All native plants on unleased land in the ACT are protected.

PlantNET description: <http://plantnet.rbgsyd.nsw.gov.au/cgi-bin/NSWfl.pl?page=nswf&lvl=sp&name=Eucalyptus-niphophila> (accessed 1 May, 2021)

EUCLID description:

[https://apps.lucidcentral.org/euclid/text/entities/eucalyptus\\_pauciflora\\_subsp\\_niphophila.htm](https://apps.lucidcentral.org/euclid/text/entities/eucalyptus_pauciflora_subsp_niphophila.htm) (accessed 1 May, 2021)

**subsp. *pauciflora***: Tree to 30 m high or mallee. Branchlets, flower buds and gumnuts non-glaucous to glaucous, not copiously waxy. Adult leaves 5-20 cm long, 12-50 mm wide. Buds 4-8 mm long. Gumnuts 5-11 mm wide.

Hybridises with *Eucalyptus dives* and *Eucalyptus radiata* subsp. *robertsonii*.

*Eucalyptus pauciflora* in PlantNET..

All native plants on unleased land in the ACT are protected.

PlantNET description: <http://plantnet.rbgsyd.nsw.gov.au/cgi-bin/NSWfl.pl?page=nswf&lvl=sp&name=Eucalyptus-pauciflora> (accessed 1 May, 2021)

EUCLID description:

[https://apps.lucidcentral.org/euclid/text/entities/eucalyptus\\_pauciflora\\_subsp\\_pauciflora.htm](https://apps.lucidcentral.org/euclid/text/entities/eucalyptus_pauciflora_subsp_pauciflora.htm) (accessed 1 May, 2021)

Author: Betty Wood.

This identification key and fact sheets are available as a free mobile application:



Android edition



iOS edition

Creative Commons Attribution 3.0 Australia (CC BY)