

Plants of South Eastern New South Wales



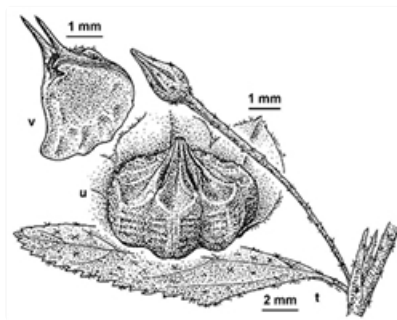
Flower, flower buds, and leaves. Australian Plant Image Index, photographer Murray Fagg, Jervis Bay



Flowering branch. Photographer Don Wood, north of Terrell



Plant. Australian Plant Image Index, photographer Murray Fagg, near Nelligen



Line drawings. t. buds and leaf; u. seed case; v. seed. GRM Dashorst, State Herbarium of South Australia, © 2021 Royal Botanic Gardens Board, Melbourne, Vic

Common name

Paddy's lucerne, Common sida

Family

Malvaceae

Where found

Woodland, grassy areas, roadsides, gardens, and other disturbed sites. Coast, ranges, and the eastern edge of the tablelands.

Notes

Introduced shrub or woody **perennial** herb to 2 m tall. Stems **stellate** hairy (needs a hand lens or a macro app on your phone/tablet to see) to hairless. Leaves **alternating** up the stems, 1.5-9 cm long, 3-40 mm wide, surfaces dark green, upper surface almost hairless, lower surface pale and densely stellate-hairy, margins toothed towards the leaf tips, **entire** at the leaf base. Flowers 15-20 mm in diameter, with yellow to pale orange **petals**. Flowers single. Flowers most of the year.

PlantNET description: <http://plantnet.rbgsyd.nsw.gov.au/cgi-bin/NSWfl.pl?page=nswfl&lvl=sp&name=Sida-rhombifolia> (accessed 4 February, 2021)

Author: Betty Wood.

This identification key and fact sheets are available as a free mobile application:



Android edition



iOS edition

Creative Commons Attribution 3.0 Australia (CC BY)