



Pacific Pests and Pathogens - Mini Fact Sheet Edition

<https://apps.lucidcentral.org/ppp/>

Banana black cross (071)

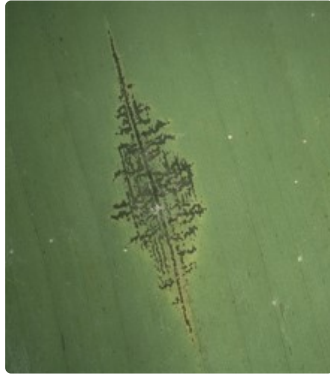


Photo 1. A single banana black cross spot, *Phyllachora musicola*, parallel to the veins of the leaf.

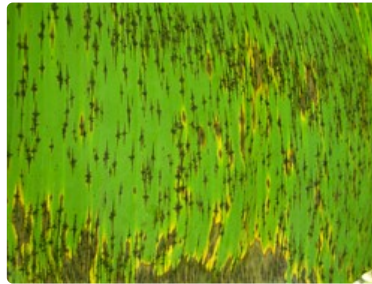


Photo 2. Dense infection of banana black cross, *Phyllachora musicola*.

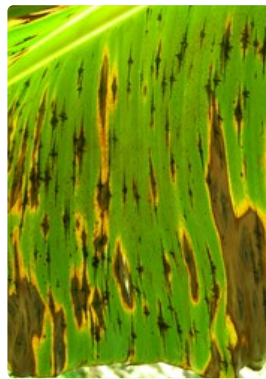


Photo 3. Spots of banana black cross, *Phyllachora musicola*, are entry points for *Cordana musae*.

Summary

- Widespread. Asia, Africa, Oceania. On banana and plantains. Usually, a minor disease,
- Spots, scattered, sometimes in groups, black, like a 4-pointed star, up to 60 mm, with long axis parallel to the veins. Velvet-like mass of spores on underside.
- Spores spread in rain and wind. Worse under shade, or if infections become sites for *Cordana* spots.
- Cultural control: reduce shade or plant in open areas; resistant varieties (e.g., Cavendish, and some FHIA varieties).
- Chemical control: unlikely to be needed.

Common Name

Banana black cross, back cross disease, tar spot

Scientific Name

Phyllachora musicola

AUTHORS Helen Tsatsia & Grahame Jackson

Photo 1 Brian Thistleton, DPIF, Northern Territory Government, Australia.

Produced with support from the Australian Centre for International Agricultural Research under project PC/2010/090: *Strengthening integrated crop management research in the Pacific Islands in support of sustainable intensification of high-value crop production*, implemented by the University of Queensland and the Secretariat of the Pacific Community.

This mini fact sheet is a part of the app *Pacific Pests and Pathogens*
The mobile application is available from the Google Play Store and Apple iTunes.

