



Pacific Pests and Pathogens - Mini Fact Sheet Edition

<https://apps.lucidcentral.org/ppp/>

Bele (Abelmoschus) leaf blotch (322)



Photo 1. Spots, round to irregular with wide dark margins, on the upper surface of bele caused by leaf mould, *Pseudocercospora abelmoschi*.

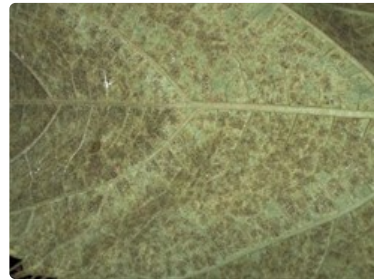


Photo 2. Under surface of bele leaf covered by sporulating infections of leaf mould, *Pseudocercospora abelmoschi*.



Photo 3. Upper surface of okra leaf showing dark patches of *Pseudocercospora abelmoschi*.



Photo 4. Leaf mould, *Pseudocercospora abelmoschi*. Patches joining together and forming spores on the underside of an okra leaf.

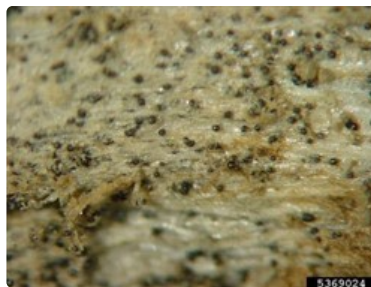


Photo 3. Close-up of the sclerotia of charcoal rot, *Macrophomina phaseolina*

Summary

- Worldwide distribution. A minor disease of *bele* on older leaves, but important on okra.
- Leaf spots, circular to irregular, often limited by the veins, brown with blackish brown margins on the upper leaf surface and pale brown mould below. Sometimes, olive-brown to blackish-brown, indistinct angular leaf blotches occur instead of spots. Severely affected leaves turn yellow, roll, wilt, and fall.
- Spread is by spores blown by wind. Survival is in crop debris.
- Cultural control: avoid planting new crops next to infected; remove older infected leaves, and burn them; when harvesting young leaves (*bele*) or fruit (okra); collect and destroy debris after final harvest; crop rotation.

- Chemical control: use chlorothalonil, copper or mancozeb.

Common Name

Leaf mould, leaf blotch

Scientific Name

Pseudocercospora abelmoschi; previously *Cercospora abelmoschi*, *Oidium abelmoschi*.

AUTHORS Grahame Jackson & Eric McKenzie

Information from *Pseudocercospora abelmoschi*. Editor Bob Macfarlane. Ecoport: http://ecoport.org/ep?Fungus=23085&entityType=FU****&entityDisplayCategory=full. Photos 1,2&4 (taken by Eric McKenzie), and used in this fact sheet, appeared previously in McKenzie E (2013) *Pseudocercospora abelmoschi* PaDIL - <http://www.padil.gov.au>.

Produced with support from the Australian Centre for International Agricultural Research under project PC/2010/090: *Strengthening integrated crop management research in the Pacific Islands in support of sustainable intensification of high-value crop production*, implemented by the University of Queensland and the Secretariat of the Pacific Community.

This mini fact sheet is a part of the app *Pacific Pests and Pathogens*

The mobile application is available from the Google Play Store and Apple iTunes.

