



## Pacific Pests, Pathogens & Weeds - Fact Sheets

<https://apps.lucidcentral.org/ppp/>

### Citrus sooty blotch (316)



Photo 1. Lower surface of citrus leaf showing spots caused by sooty blotch, *Meliola citricola*.

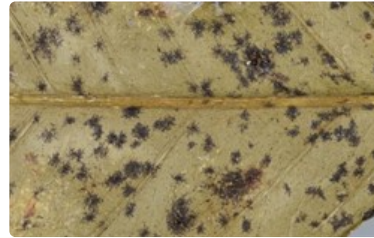


Photo 2. Spots on both the upper and lower surface of citrus leaves caused by sooty blotch, *Meliola citricola*.



Photo 3. Sooty blotch on orange, caused by *Meliola citricola*.

#### Common Name

Citrus sooty blotch, black mould, black mildew

#### Scientific Name

*Meliola citricola*

#### Distribution

Widespread. South, East and Southeast Asia, Oceania. It is present in Fiji, Papua New Guinea, Samoa, and Solomon Islands.

#### Hosts

*Citrus* species.

#### Symptoms & Life Cycle

Sooty blotch is caused by a fungus that infects leaves and fruit. It is unlikely that it affects yield, although, if infection is severe it may block sunlight, reducing photosynthesis, and, in turn, that could lower fruit production.

On the leaves, the fungus colonises both upper and lower surfaces causing black, circular spots, up to 5 mm diameter (Photos 1&2). It infects young leaves and fruit, but growth is slow so that the spots are seen only when leaves and fruit mature (Photo 3). Spores are produced in the black spots, and these are spread by wind during wet or humid weather when there are heavy dews. The fungus does best on densely shaded trees.

#### Impact

Sooty mould is a "cosmetic disease". The spots on the fruit are shallow and there are no rots in the flesh; nevertheless, the spots are unsightly and they reduce the market value of the fruit.

#### Detection & inspection

The spots on the fruit caused by sooty blotch are often mistaken for a sooty mould. There are reports that sooty blotch has been found with *Capnodium citri*, one of the sooty moulds that grow on citrus (see **Fact Sheet no. 051**). However, spots caused by sooty moulds depend on honeydew from sap-sucking insects, and that is not the case for spots caused by sooty blotch.

## Management

### CULTURAL CONTROL

#### During growth

- Prune trees to improve air movement so that leaves and fruit dry faster after rain or dew. The fungus needs water for the spores to germinate, infect and spread. Avoid over-pruning: i) removing too much will reduce the crop, and ii) damage the bark by allowing over-exposure to the sun. Prune to remove "unhealthy, unwanted and poorly positioned branches" (Department of Agriculture and Food, Western Australia) after the main harvest and before bud break. That is, remove any sprouts and weak or crossing branches.
- Avoid shade. Do not grow citrus beneath tall trees. The leaves and fruits will stay wet longer and this will encourage sooty blotch infections.

### CHEMICAL CONTROL

Control of sooty blotch is achieved by using petroleum-based oil sprays. These can be purchased as commercial products; these sprays are often called "horticultural oil").

---

AUTHORS Grahame Jackson & Eric McKenzie

Photos 1&2 (taken by Eric McKenzie), and used in this fact sheet, appeared previously in McKenzie E (2013) *Meliola citricola* PaDIL - <http://www.padil.gov.au>

Produced with support from the Australian Centre for International Agricultural Research under project PC/2010/090: *Strengthening integrated crop management research in the Pacific Islands in support of sustainable intensification of high-value crop production*, implemented by the University of Queensland and the Secretariat of the Pacific Community.

---

This fact sheet is a part of the app *Pacific Pests, Pathogens & Weeds*

The mobile application is available from the Google Play Store and Apple iTunes.

