



Pacific Pests, Pathogens & Weeds - Fact Sheets

<https://apps.lucidcentral.org/ppp/>

Coffee rust (141)

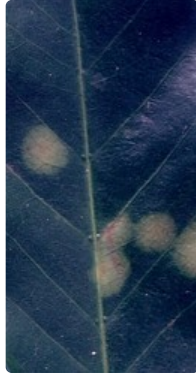


Photo 1. Young yellowish leaf spots, 3-5 mm diameter, of coffee rust, *Hemileia vastatrix*, on the upper surface of a coffee leaf mostly between the veins. Some of the spots are starting to merge.

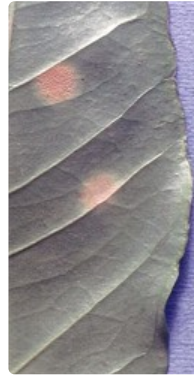


Photo 2. Yellow-orange spots on the underside of a coffee leaf caused by coffee rust, *Hemileia vastatrix*. The spots have started to form powdery spores.



Photo 3. Close-up of the powdery spore masses of coffee rust, *Hemileia vastatrix*, on the underside of a coffee leaf at a late stage of infection when many of the spots have merged.

Common Name

Coffee leaf rust

Scientific Name

Hemileia vastatrix

Distribution

Worldwide. Asia, Africa, North, South and Central America, the Caribbean, Oceania. It is recorded from American Samoa, Cook Islands, Fiji, French Polynesia, New Caledonia, Papua New Guinea, Samoa, and Vanuatu.

Hosts

Coffea arabica, *Coffea canephora*

Symptoms & Life Cycle

At first, the spots are 2-3 mm diameter, expanding up to 15 mm diameter, and forming yellow-orange powdery blotches on the underside of leaves and yellow areas on top (Photos 1&2). Later, the centres of the spots on the top turn brown with yellow margins. Blotches may

merge and cover the leaf blade. In severely affected plants, leaves fall and branches die back.

Spores are produced in the yellow-orange blotches on the under surface of leaves (Photo 3). They are spread by wind, but require water for germination. Insects also spread them. In countries where there is a dry season, the spores survive in infected leaves.

Impact

The disease is severe on arabica coffee, especially when grown in warm, moist areas in the lowlands (under 1500 m above sea level). Infection causes leaf fall, and this in turn affects the growth of new stems, which bear the next season's crop.

Damage of a different kind occurs if there is a rust epidemic on trees with high yields. It is called "overbearing dieback". Loss of leaves leads to movement of food from the shoots and roots into the berries, which may ripen prematurely, resulting in beans of poor quality. Overbearing dieback may eventually kill the trees.

Plants weakened by rust are also more susceptible to attack by anthracnose (another fungus), which is not normally the cause of a serious disease. Overall, a 30 to 50% reduction in yield is possible from coffee rust.

Detection & inspection

Look for the spots on the leaves, especially the yellow-orange spots on the underside of the leaves, and the brown spots with yellow margins above.

Management

Factors that affect the severity of rust disease are: (i) amount of rainfall; (ii) the numbers of infected leaves at the beginning of an epidemic to supply spores; and (iii) the amount of foliage on the trees.

QUARANTINE

A new strain of the fungus has emerged in Central America (and perhaps some countries in South America) which is adapted to higher altitudes, and also has some resistance to fungicides.

CULTURAL CONTROL

Cultural control is important; there are a number of ways that it can be used to reduce the impact of coffee leaf rust:

- *Tree spacing*: If trees are too close then the disease develops faster because the leaves remain moist longer, and this increases the number of spores that germinate.
- *Nutrition*: It is important that the trees have the nutrients needed. High-yielding trees are especially susceptible to rust if they are not well fertilized. The trees transfer foods to the berries, and this weakens the tree, making them vulnerable to other diseases.
- *Shade*: Excessive shade increases rust disease as it keeps leaves moist for longer, and this also increases the number of spores that germinate.

RESISTANT VARIETIES

Robusta coffee varieties are generally resistance to all races of coffee leaf rust. Natural hybrids between arabica and robusta occur, and these, too, are resistant to most rust races. They have been used in breeding programs to produce catimor (crosses between Timor and Caturra varieties) and other hybrids.

CHEMICAL CONTROL

In general, chemical control is not required in plantations above 1700 m because of the lower temperatures. Where fungicides are used, applications are made at 4-6 weekly intervals. However, the need for chemical control depends on the varieties grown. For instance, if catimor hybrids are grown there is little need for chemical control.

If chemical control is required, use:

- *Protectant products*: Copper products were the first to be used against rust, and are still widely applied.
- *Systemic products*: Triazole fungicides.

Note, that copper fungicides may kill the insects that give biological control of the green scale insect, *Coccus viridis*.

This fact sheet is a part of the app *Pacific Pests, Pathogens & Weeds*

The mobile application is available from the Google Play Store and Apple iTunes.

