



Pacific Pests, Pathogens & Weeds - Fact Sheets

<https://apps.lucidcentral.org/ppp/>

Papaya black spot (158)



Photo 1. Black spot of papaya, *Asperisporium caricae*, on the underside of the leaf. Large numbers of spots cause the leaves to dry, die and fall.



Photo 2. Close-up of underside of a papaya leaf showing black spot, *Asperisporium caricae*.

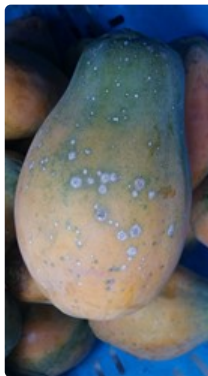


Photo 3. Fruit with spots of *Asperisporium caricae* overgrown by fungal hyperparasite.

Common Name

Black spot

Scientific Name

Asperisporium caricae; previously *Cercospora caricae*.

Distribution

Worldwide. Asia, Africa, North, South and Central America, the Caribbean, Oceania. It is recorded from Australia, Fiji, French Polynesia, New Caledonia, and Solomon Islands.

Hosts

Papaya

Symptoms & Life Cycle

Leaf spots, round to irregular, 3-6 mm diameter, develop on the older leaves; they are pale brown above with a yellow margin; below, spores develop turning the spots to dark brown or black (Photos 1&2). If the leaves are severely infected they turn brown and die. Spots on the fruit are also brown to black and slightly sunken.

The black lesions may become white if hyperparasitised by fungi such as *Cephalosporium*, *Rhizotrichum* or *Verticillium* (Photo 3).

The spores from the underside of the leaves are spread in wind and wind-driven rain. Long distance spread occurs when the fruits are traded at markets.

Impact

Usually, the disease is a minor problem, although heavily spotted leaves result in extensive leaf fall. If this occurs, the growth of the trees is affected, and fruit yield is lower than on healthy trees. Infection of young fruit also causes them to fall, and infections on mature fruit affect their market quality. The disease is worse in wet weather.

Detection & inspection

Look for the dark brown to black spots on the fruit and on the underside of the leaves where the spores are produced; on the top surface the spots are light brown with yellow margins, and fade in colour as they age. Look for spots mostly on the older leaves. Look to see if the leaves dry and die early when the spotting is severe. Look for the spots on the leaves from below, up into the crown of the tree.

Management

CULTURAL CONTROL

Cultural control is particularly important in the management of this disease. Remove infected leaves and fruit as soon as they are seen, take them out of the plantation and burn them.

RESISTANT VARIETIES

None are known to be resistant.

CHEMICAL CONTROL

Use protectant fungicides, such as those containing copper, mancozeb or chlorothalonil. Make sure that the undersides of the leaves are sprayed, as this is where the spores are produced. In Australia, tebuconazole is registered for use against this disease. Alternate sprays of this systemic fungicide with one of the three protectants mentioned.

AUTHOR Grahame Jackson

Information from *Diseases of fruit crops in Australia* (2009). Editors, Tony Cooke, Denis Persley, Susan House. CSIRO Publishing; and from CABI (2013) *Asperisporium caricae* (black spot). Crop Protection Compendium. (<http://www.cabi.org/cpc>); and from Liberato JR, McTaggart AR, Shivas RG (2006) *Asperisporium Black Spot of Papaya (Asperisporium caricae)*. PaDIL - <http://www.padil.gov.au>

Produced with support from the Australian Centre for International Agricultural Research under project PC/2010/090: *Strengthening integrated crop management research in the Pacific Islands in support of sustainable intensification of high-value crop production*, implemented by the University of Queensland and the Secretariat of the Pacific Community.

This fact sheet is a part of the app *Pacific Pests, Pathogens & Weeds*

The mobile application is available from the Google Play Store and Apple iTunes.

