



Pacific Pests, Pathogens & Weeds - Fact Sheets

<https://apps.lucidcentral.org/ppp/>

Taro leaf blight (014)



Photo 1. Spots of taro leaf blight at the margins and inside the leaf blade. Note that some of the centres of the spots are falling out. Many have a characteristic yellow margin, or halo.



Photo 2. A taro leaf blight spot showing where the spores are formed at the margin.

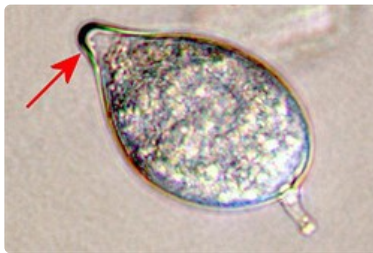


Photo 3. The spore of the water mould, *Phytophthora colocasiae*, has a characteristic shape to the top (arrow).



Photo 4. Droplets associated with taro leaf blight spots on the underside of the leaf which hardens into pellets as they dry. Leaf spots of other fungi infecting taro do not do this.



Photo 5. The underside of a taro leaf blight spot showing the liquid which "bleeds" from the leaf when it is infected; this liquid dries during the day and becomes hard and dark brown.



Photo 6. The spots are not only very large on this susceptible variety (Niue) in Samoa, but they have joined together to form a blight.

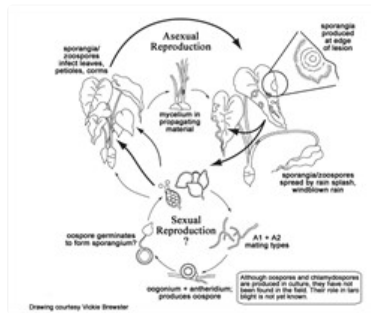


Diagram. Life cycle of *Phytophthora colocasiae*. Note that the sexual phase of the life cycle has not been seen in Pacific island countries; this is because two mating strains are needed to form the oospore, and only the A2 strain has been found. The oogonium and antheridium are the equivalent to female and male parts which fuse to form the oospore (or resting stage).

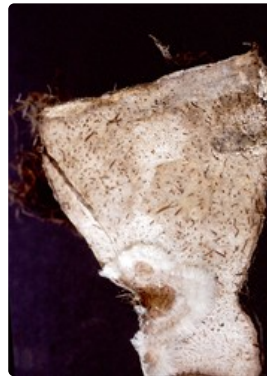


Photo 7. A brown firm rot in the top part of a corm caused by the water mould, *Phytophthora colocasiae*. The white cottony growth at the lower left side is caused by the fungus *Athelia rolfsii*.

Common Name

Taro leaf blight

Scientific Name

Phytophthora colocasiae

Distribution

Worldwide. Asia, Africa, North, (Hawaii), South (Argentina, Brazil), the Caribbean, Oceania. It is recorded from American Samoa, Guam, Federated States of Micronesia, Northern Mariana Islands, Palau, Papua New Guinea, Samoa, and Solomon Islands. The disease spread to West Africa in 2010.

Hosts

The fungus attacks taro and *Alocasia macrorrhizos*; these are the only hosts known from the Pacific islands.

Symptoms & Life Cycle

Phytophthora colocasiae is a water mould, an oomycete, not a fungus. It is related to algae. Spots occur on the leaves, and often these have yellow margins (Photo 1). After a few days, a white ring can be seen at the margin of the spots (Photo 2); this is the area where large numbers of spores (Photo 3) are produced during the night. However, the spores dry out quickly in the sun and by mid-morning they have shrivelled and died. They only stay alive if it is cloudy or raining. The next night another ring of spores will form.

Underneath the spots, red-brown merging droplets occur (Photos 4). The droplets dry as dark pellets (Photo 5).

Infection occurs anywhere on the leaf surface, but often at the edges where rain and dew collect. Spots occur on the leaf stalks (petioles) of very susceptible varieties.

The spots merge and secondary spots develop (Photo 6), and rapidly a blight develops as most of the leaf blade become infected and begins to die.

Spread of the water mould occurs in a number of ways: (i) wind and rain to other leaves, nearby plants and distant plantations; (ii) on suckers planted with infected leaves attached; (iii) as infections on leaf stalks of planting material (called 'tops') in two ways, (a) as spots on the petioles of susceptible varieties, and (b) as infections at the cut ends of leaf stalks when they are trimmed for planting.

When spores (called 'sporangia') land on the surface of a leaf they can germinate in two ways:

- They germinate directly, like a seed.
- The spores produce smaller spore inside them, up to 20; these are called ('zoospores'). The sporangia burst and release the zoospores which swim about for a short while, then settle down, germinate and infect.

In either cases, infections cause the brown spots.

The water mould exists as two strains: A1 and A2. If the two forms mate an 'oospore' is produced which has thick walls and can survive times when the crop is not growing. However, only the A2 strain occurs in the Pacific island countries (Diagram).

Corms become infected after harvest, when the suckers are removed (Photo 7).

Impact

Taro leaf blight reduces the life of the leaves: instead of lasting 40 days they last 20. The result is that plants have few leaves and, consequently, produce small corms. Yield is reduced by about 40%.

Taro leaf blight also causes a firm, brown corm rot after harvest. Corms become completely decayed by the water mould in 7-10 days, often with fungi present in the rots helping the decay process. (see **Fact Sheet no. 179**).

Detection & inspection

Look for spots that grow rapidly, join together and cause a blight. Look for plants with leaves that die early - infected plants have 3-4 leaves instead of the 6-7 on those that are healthy. Look for the white rings of spores at the margin of the spots, seen most clearly in the early morning. Look for dark, irregular-shaped pellets on the underside of the spots.

Management

QUARANTINE

Note, that there are some countries in the Pacific still vulnerable to this disease, so where it is not yet present, biosecurity authorities should be alert to potential pathways for its introduction. If countries want to introduce germplasm for testing, they should follow the FAO/IBPGR *Technical Guidelines for the Safe Movement of Edible Aroid Germplasm* (<http://www.bioversityinternational.org/e-library/publications/detail/edible-roid/>). This stipulates that introductions should be as virus-tested plants growing in tissue culture.

CULTURAL CONTROL

Where rainfall is high, taro leaf blight is difficult to control. Cultural methods can be tried, but they are often not effective.

Before planting:

- Make new gardens as far away as possible from old ones. It is best if the gardens are surrounded by forest.
- Do not plant gardens downwind from older gardens with the disease.
- If possible, make gardens in the highlands, above 500 m. The disease is less at cooler temperatures.
- Do not plant suckers with leaves attached; the leaves may be infected.

During growth:

- Inspect young taro twice a week; cut off infected leaves as soon as they are seen. Do this regularly; however, if rainfall is high, it can only delay the disease.

After harvest:

- Harvest when the leaves are dry; otherwise, spores may infect the ends of the leaf stalks when they are cut as "tops" for the next crop.
- To prevent storage rots, wash the soil off the corms, trim the leaves and put them in plastic bags. Washing corms in 1 per cent household bleach before placing them in plastic bags improves storage.

RESISTANT VARIETIES

Breeding programs in Papua New Guinea and Samoa have produced plants resistant to taro leaf blight. These are available from the CePaCT lab of the Secretariat of the Pacific Community. In Solomon Islands, a hybrid, LA16, has been bred for resistance to taro leaf blight.

CHEMICAL CONTROL

- Use copper fungicides (especially copper oxychloride). However, sprays are needed every 10-14 days, and are only recommended where taro are grown for sale. Application using a motorised knapsack sprayer is more efficient and effective than using a hydraulic knapsack sprayer.

- Use metalaxyl (a systemic product) in combination with copper; it gives even better control, but costs are high.
- Use phosphorous acid (or potassium phosphonate) alternating with mancozeb (used successfully in Samoa).

AUTHORS Helen Tsatsia & Grahame Jackson

Photos 1&6 Brooks FE (2005) Taro leaf blight. *The Plant Health Instructor*. DOI:10.1094/PHI-I-2005-0531-01. Diagram Vickie Brewster.

Produced with support from the Australian Centre for International Agricultural Research under project PC/2010/090: *Strengthening integrated crop management research in the Pacific Islands in support of sustainable intensification of high-value crop production*, implemented by the University of Queensland and the Secretariat of the Pacific Community.

This fact sheet is a part of the app *Pacific Pests, Pathogens & Weeds*

The mobile application is available from the Google Play Store and Apple iTunes.

