



Pacific Pests, Pathogens & Weeds - Mini Fact Sheet Edition

<https://apps.lucidcentral.org/ppp/>

Capsicum *Aleurotrachelus* whitefly (168)



Photo 1. Adult *Aleurotrachelus* whitefly. Note the curly strands of wax.

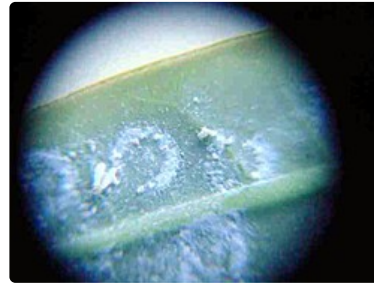


Photo 2. Adult *Aleurotrachelus* whitefly and the circular egg mass characteristic of this insect.



Photo 3. Larvae of the *Aleurotrachelus* whitefly at an early stage.



Photo 4. Late stage larvae of *Aleurotrachelus* whitefly which are now black.

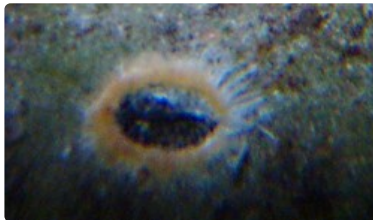


Photo 5. The late stage of the larvae are black. In this photograph an orange ring of the fungus *Aschersonia aleyrodis* is present.



Photo 6. Fungus, probably *Aschersonia* sp. growing on pupae of the whitefly, *Aleurotrachelus trichoides*. As it produces spores so it becomes orange.



Photo 7. Complete colonisation of the pupae of *Aleurotrachelus trichoides* on the underside of a kava leaf by the fungus, *Aschersonia* sp.



Photo 8. Magnified pupae of *Aleurotrachelus trichoides* showing that the fungus, *Aschersonia* sp. has formed a crust over them.

Summary

- Widespread distribution. South and Central America, Africa, Caribbean, Oceania. On plants in potato, brassica and cucurbit families. An important pest of capsicum and kava.
- Eggs laid in circles, nymphs are “crawlers” at first then settle becoming oval, black, covered by curly strands of wax; adults, 2-3 mm, look like spiralling whiteflies. They produce “honeydew” excretion.
- Sucks plant sap; sooty moulds grow on honeydew.
- Natural enemies: a minute wasp, *Encarsia formosa*, is widely used to control this whitefly.
- Chemical control: soap, white or horticultural oils; note that most synthetic insecticides will kill natural enemies.

Common Name

Aleurotrachelus or Solanum whitefly

Scientific Name

Aleurotrachelus trachoides

AUTHOR Grahame Jackson
Photos 1-8 Konrad Engelberger, Pohnpei, Federated States of Micronesia.

Produced with support from the Australian Centre for International Agricultural Research under project PC/2010/090: *Strengthening integrated crop management research in the Pacific Islands in support of sustainable intensification of high-value crop production*, implemented by the University of Queensland and the Secretariat of the Pacific Community.

This mini fact sheet is a part of the app *Pacific Pests, Pathogens & Weeds*

The mobile application is available from the Google Play Store and Apple iTunes.

