



Pacific Pests, Pathogens & Weeds - Mini Fact Sheet Edition

<https://apps.lucidcentral.org/ppp/>

Caribbean leatherleaf slug (407)



Photo 1. The Caribbean leatherleaf slug, *Sarasinula plebeia*, moving over a capsicum fruit.



Photo 2. The Caribbean leatherleaf slug, *Sarasinula plebeia*, that has stopped moving and retracted into its mantle. Note the difference in size of the same slug when moving (Photo 1).



Photo 3. Antennae of the Caribbean leatherleaf slug, *Sarasinula plebeia*, with eyes at the ends.



Photo 4. The Caribbean leatherleaf slug, *Sarasinula plebeia*, eating into an eggplant.

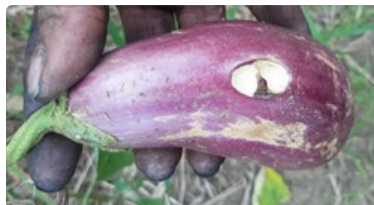


Photo 5. Damage to eggplant by the Caribbean leatherleaf slug, *Sarasinula plebeia*.



Photo 6. Damage to eggplant by the Caribbean leatherleaf slug, *Sarasinula plebeia*.



Photo 7. Damage to eggplant by the Caribbean leatherleaf slug, *Sarasinula plebeia*.



Photo 8. Damage to eggplant by the Caribbean leatherleaf slug, *Sarasinula plebeia*.

Summary

- Worldwide. Africa (restricted), Asia (restricted), Southeast Asia (Malaysia, the Philippines), North, South, Central America, the Caribbean, Oceania. In Australia, Fiji, Guam, New Caledonia, Northern Marianna Islands, Vanuatu.
- Important invasive pest of vegetables; also attacks, ornamentals, tree crops, nursery plants, weeds. Spreads rat lung worm to humans.
- Greyish-brown, flattish with black markings, up to 70 mm long when moving (no stripe on the back). Nocturnal. Found under leaves, stones, on low trees in variety of habitats. Burrows deeply in dry times. Populations increase rapidly after long rains.
- Natural enemies: predatory snails and flatworms, but they should NOT be introduced without environmental impact studies. These generalists will annihilate local snails. Use Indian runner ducks (but note, this slug climbs trees).
- Biosecurity: many Pacific island countries are vulnerable.
- Cultural control: bare earth or sand around plots; collect and destroy; use beer traps to attract slugs.
- Chemical control: note, metaldehyde NOT recommended: toxic to livestock, pets and humans; use baits with iron phosphate, sodium ferric EDTA - effective and safer.

Common Name

Caribbean leatherleaf slug; also known as the bean slug or the American brown slug.

Scientific Name

Sarasinula plebeia

AUTHOR Grahame Jackson & Manu Mui

Information from *Sarasinula plebeia*. Wikipedia. https://en.wikipedia.org/wiki/Sarasinula_plebeia; Veronicellidae: *Sarasinula* spp. Terrestrial Mollusc Tool. USDA, UF, Lucid (<http://idtools.org/id/mollusc/factsheet.php?name=Veronicellidae:%20Sarasinula%20spp.>); and from Brodie G, Barker GM (2012) *Sarasinula plebeia* (Fischer, 1868). Family Veronicellidae. USP Introduced Land Snails of the Fiji Islands. Fact Sheet Series, No. 4. (https://www.researchgate.net/publication/265646912_Sarasinula_plebeia_Fischer_1868_Family_Veronicellidae).

Produced with support from the Australian Centre for International Agricultural Research under project HORT/2016/185: *Responding to emerging pest and disease threats to horticulture in the Pacific islands*, implemented by the University of Queensland and the Secretariat of the Pacific Community.

This mini fact sheet is a part of the app *Pacific Pests, Pathogens & Weeds*

The mobile application is available from the Google Play Store and Apple iTunes.





Australian Government
Australian Centre for
International Agricultural Research

Copyright © 2020. All rights reserved.