



## Pacific Pests, Pathogens & Weeds - Mini Fact Sheet Edition

<https://apps.lucidcentral.org/ppp/>

### Croton whitefly (335)

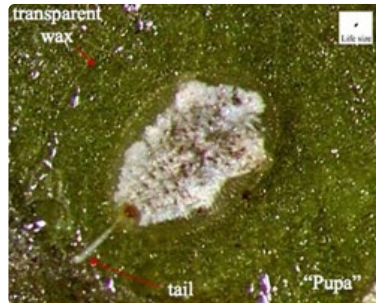


Photo 1. Pupa of croton whitefly, *Orchamoplatus mammaeferus*.



Photo 2. Adult croton whitefly, *Orchamoplatus mammaeferus*.

#### Summary

- Narrow distribution. On many trees, shrubs and ornamentals. Probably, a minor pest, but little research.
- Adults and nymphs suck the sap causing the leaves to turn and distort; on croton, and other ornamentals, reduces quality.
- Eggs on stalks, laid in rings. Nymphs, at first, active "crawlers", later, oval, flat, on underside of leaves; pupae, oval, about 0.75 mm long, brownish-yellow, waxy with a white "tail". Adults, yellow with red eyes and white, powdery wings.
- Spread by crawlers, or carried by wind, vehicles, animals, birds, on clothes, and the trade in plants.
- Natural enemies: several ladybird beetle predators.
- Cultural control: if pesticides used, remove the most infested leaves before spraying.
- Chemical control: use soap solution, horticulture or white oils (see **Fact Sheet no. 56**). Note, insecticides will kill natural enemies and probably make the problem worse.

#### Common Name

Croton whitefly

#### Scientific Name

*Orchamoplatus mammaeferus*; previously, *Aleuroplatus samoanus* and *Orchamus samoanus*.

AUTHOR Grahame Jackson

<sup>1</sup>Information from Swaine G (1971) *Agricultural Zoology in Fiji*. Her Majesty's Stationery Office, London; and from CABI (2015) *Orchamoplatus mammaeferus* (croton whitefly) Crop Protection Compendium. ([www.cabi.org/cpc](http://www.cabi.org/cpc)); and Aleyrodidae: Key to the genera. USDA, APHIS, PPQ. (<http://keys.lucidcentral.org/keys/v3/whitefly/key/Aleyrodidae%20Pupa%20Key%20to%20the%20Genera/Media/Html/Orchamoplatus.htm>). Photo 1 Croton whitefly (*Orchamoplatus mammaeferus*) California Department of Food and Agriculture. ([https://www.cdffa.ca.gov/plant/ppd/PDF/orchamoplatus\\_mammaeferus.pdf](https://www.cdffa.ca.gov/plant/ppd/PDF/orchamoplatus_mammaeferus.pdf)). Photo 2 MAF Plant Health & Environment Laboratory (2011) Croton Whitefly (*Orchamoplatus mammaeferus*) PaDIL - (<http://www.padil.gov.au>).

Produced with support from the Australian Centre for International Agricultural Research under project PC/2010/090: *Strengthening integrated crop management research in the Pacific Islands in support of sustainable intensification of high-value crop production*, implemented by the University of Queensland and the Secretariat of the Pacific Community.

This mini fact sheet is a part of the app *Pacific Pests, Pathogens & Weeds*

The mobile application is available from the Google Play Store and Apple iTunes.





Australian Government  
Australian Centre for  
International Agricultural Research

---

*Copyright © 2020. All rights reserved.*