



## Pacific Pests, Pathogens & Weeds - Mini Fact Sheet Edition

<https://apps.lucidcentral.org/ppp/>

### Lettuce *Cercospora* leaf spot (210)



Photo 1. Lettuce leaf spot, *Cercospora lactucae-sativae*. Some spots have joined together, especially at the margins.

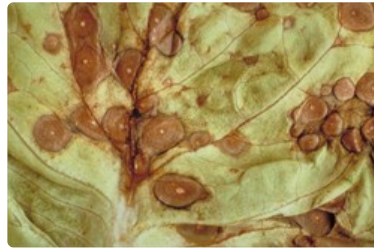


Photo 2. Brown leaf spots, *Cercospora lactucae-sativae*, showing their whitish-grey centres.



Photo 3. Brown leaf spots, *Cercospora lactucae-sativae*, on an older leaf. This is where the infections begin.



Photo 4. Severe infection of lettuce leaf spot, *Cercospora lactucae-sativae*, causing outer leaves to collapse.

### Summary

- Worldwide distribution. Tropics and sub-tropics. On lettuce, and relatives in daisy family, including weeds. Occasionally, an important disease.
- Spots circular to oval, brown, with whitish centres, up to 1 cm. Later, merge. On older leaves first.
- Wet weather disease; spores spread in wind and rain.
- Cultural control: in nurseries – keep free of weeds and avoid overcrowding; in field – space plants to allow air movement; drip irrigation; weed; 2-3-year crop rotation; avoid overlapping crops; collect and burn trash after harvest.
- Chemical control: likely that cultural practices sufficient; if fungicide needed, use mancozeb.

### Common Name

Lettuce leaf spot

### Scientific Name

*Cercospora lactucae-sativae*; previously known as *Cercospora longissima*. It is closely related to *Cercospora apii*.

AUTHOR Grahame Jackson

Photos 1&2 Kohler F, Pellegrin F, Jackson G, McKenzie E (1997) *Diseases of cultivated crops in Pacific Island countries*. South Pacific Commission. Pirie Printers Pty Limited, Canberra, Australia.

Produced with support from the Australian Centre for International Agricultural Research under project PC2010/090: *Strengthening integrated crop management research in the Pacific Islands in support of sustainable intensification of high-value crop production*, implemented by the University of Queensland and the Secretariat of the Pacific Community.

This mini fact sheet is a part of the app *Pacific Pests, Pathogens & Weeds*  
The mobile application is available from the Google Play Store and Apple iTunes.

