



## Pacific Pests, Pathogens & Weeds - Mini Fact Sheet Edition

<https://apps.lucidcentral.org/ppp/>

### Rice seed bug (299)

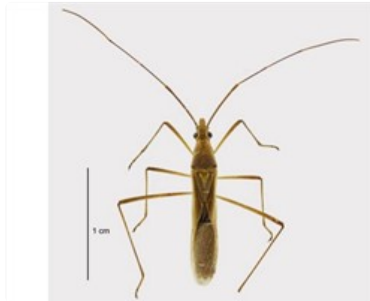


Photo 1. Adult rice seed bug, *Leptocoris acuta*.



Photo 2. Adult rice seed bug, *Leptocoris acuta*, side view.

#### Summary

- Widespread distribution. Asia, Central America, Oceania. On rice and grasses. An important pest.
- Egg laid on the midribs of leaves, nymphs like adults, but wingless. Adults 15 mm, brown, white underneath, narrow.
- Contents of seed sucked out when still soft, becoming shrivelled and small.
- Natural enemies: wasp parasitoids.
- Cultural control: weed within and around fields; avoid overlapping crops; in small plots, sweep to catch bugs (morning and evening); burn grass on bunds and around fields after harvest.
- Chemical control: synthetic pyrethroids, but will kill natural enemies.

#### Common Name

Rice seed bug, rice bug, rice earhead bug

#### Scientific Name

*Leptocoris acuta*. Note, there is a related species, *Leptocoris oratorius*, but research in Indonesia concluded that the loss due to the pest was minimal.

AUTHOR Grahame Jackson

<sup>1</sup>International Rice Research Institute, Philippines. Information from Catindig J (Undated) Rice bug. Rice Knowledge Bank. IIRRI; and from Serrano AC, *et al.* (2014) Featured Creatures: Rice bug. UF/IFAS, University of Florida. ([http://entnemdept.ufl.edu/creatures/field/Leptocoris\\_acuta.htm](http://entnemdept.ufl.edu/creatures/field/Leptocoris_acuta.htm)). Photos 1&2. Rhode BF, Crosby TK (2013) Rice Bug (*Leptocoris acuta*). PaDIL - (<http://www.padil.gov.au>).

Produced with support from the Australian Centre for International Agricultural Research under project PC/2010/090: *Strengthening integrated crop management research in the Pacific Islands in support of sustainable intensification of high-value crop production*, implemented by the University of Queensland and the Secretariat of the Pacific Community.

This mini fact sheet is a part of the app *Pacific Pests, Pathogens & Weeds*

The mobile application is available from the Google Play Store and Apple iTunes.





Australian Government  
Australian Centre for  
International Agricultural Research

---

*Copyright © 2020. All rights reserved.*