



## Pacific Pests, Pathogens & Weeds - Mini Fact Sheet Edition

<https://apps.lucidcentral.org/ppp/>

### Sugarcane whitefly (245)

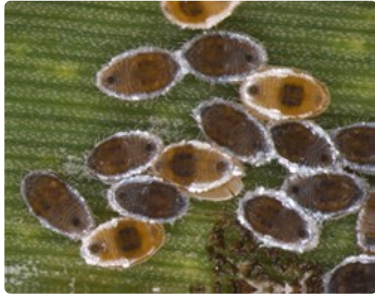


Photo 1. Late stage nymphs and pupae of the sugarcane whitefly, *Neomaskellia bergii*.



Photo 2. Close-up of adult sugarcane whitefly, *Neomaskellia bergii*.



Photo 3. Eggs and adults of the sugarcane whitefly, *Neomaskellia bergii*.



Photo 4. Adult sugarcane whiteflies, *Neomaskellia bergii*, attended by ants.

#### Summary

- Widespread distribution. Asia, Africa, Oceania. On sugarcane, bamboo, sorghum and grasses. A minor pest.
- Light green egg masses on undersides of leaves; oval brown nymphs; adults with black bands on wings. Produce honeydew; ants often present attracted to the honeydew excreta.
- Biocontrol: several tiny wasps, and ladybird beetles; but natural enemies need ant removal to be effective.
- Cultural control: destroy ant colonies with hot water.
- Chemical control: use soap, white or horticultural oils. Use synthetic pyrethroids to kill ants.

#### Common Name

Sugarcane whitefly

#### Scientific Name

*Neomaskellia bergii*

---

AUTHOR Grahame Jackson

Information from Evans GA (2007) The whiteflies (Hemiptera: Aleyrodidae) of the world and the host plants and natural enemies USDA/APHIS Version 070606. Photos 1-3 National Bureau of Agricultural Insect Resources, ICAR, India.

Produced with support from the Australian Centre for International Agricultural Research under project PC2010/090: *Strengthening integrated crop management research in the Pacific Islands in support of sustainable intensification of high-value crop production*, implemented by the University of Queensland and the Secretariat of the Pacific Community.

---

The mobile application is available from the Google Play Store and Apple iTunes.

