



Pacific Pests, Pathogens & Weeds - Mini Fact Sheet Edition

<https://apps.lucidcentral.org/ppp/>

Sweetpotato flea beetle (096)



Photo 1. Adult sweetpotato flea beetle, *Chaetocnema confinis*.



Photo 2. Irregular feeding marks on the upper surface of sweetpotato made by the sweetpotato flea beetle, *Chaetocnema confinis*.

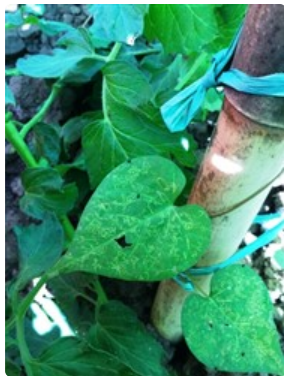


Photo 3. Sweetpotato flea beetles, *Chaetocnema confinis*, on leaf of *Ipomoea* (weed) species.



Photo 4. Rots developing from feeding marks of sweetpotato flea beetle, *Chaetocnema confinis*, on sweetpotato.

Summary

- Worldwide distribution. On sweetpotato, most probably water spinach (kangkong), and wild *Ipomoea* types in the morning glory family. A minor pest.
- Adult beetles makes irregular feeding marks as they scape the leaf surface.
- Eggs laid in soil at base of vines; larvae feed on the roots, with some types (in the USA) making trails over the storage roots, which cause splitting.
- Cultural control: select healthy cuttings; avoid overlapping crops; avoid planting consecutive crops in the same land as eggs, larvae and pupae may still be in the soil.
- Chemical control: none recommended.

Common Name

Sweetpotato flea beetle

Scientific Name

Chaetocnema species. The species known as the sweetpotato flea beetle is *Chaetocnema confinis*, especially in the USA. There may be other species.

AUTHORS Helen Tsatsia & Grahame Jackson

Photo 1 Mike Quinn, TexasEnto.net. (<http://bugguide.net/node/view/559582>). Photos 3&4 Mani Mua, SPC, Sigotoka Research Station, Fiji.

Produced with support from the Australian Centre for International Agricultural Research under project PC/2010/090: *Strengthening integrated crop management research in the Pacific Islands in support of sustainable intensification of high-value crop production*, implemented by the University of Queensland and the Secretariat of the Pacific Community.

This mini fact sheet is a part of the app *Pacific Pests, Pathogens & Weeds*

The mobile application is available from the Google Play Store and Apple iTunes.



Copyright © 2020. All rights reserved.