



Pacific Pests, Pathogens & Weeds - Mini Fact Sheet Edition

<https://apps.lucidcentral.org/ppp/>

Tomato powdery mildew (314)



Photo 2. Symptoms of tomato powdery mildew, *Leveillula taurica*, on the underside of a chilli leaf. Note the patches are bordered by the main veins.

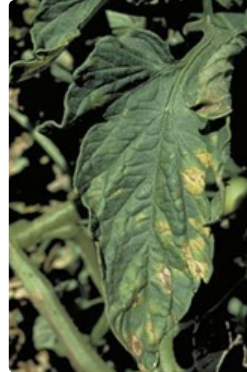


Photo 1. Tomato powdery mildew, *Leveillula taurica*, on the upper leaf surface showing yellowish patches.

Summary

- Worldwide distribution. On crops, ornamentals, weeds in many families: cotton, cucumber, onion, legume, potato, and more. Common and potentially serious fungal disease.
- Lower leaves infected first with whitish powdery patches on undersides, yellow irregular spots above. Unlike other powdery mildew: little fungal growth over the leaf surface.
- Spread by spores on the wind.
- Cultural control: nursery: avoid overcrowding; weed; check plants before planting. Field: remove volunteers; do not overapply N; avoid moisture stress; choose areas with good air movement; resistant varieties.
- Chemical control: commercial plantings: i) wettable sulphur, ii) chlorothalonil, or iii) triazoles. Organic regime: horticultural oil, potassium bicarbonate or wettable sulphur. (oils are eradicants). Apply wettable sulphur early morning or evening. Never within 2 weeks of the last application of an oil spray. READ LABEL. If few plants: use normal strength milk diluted 1 part in 10 parts of water.

Common Name

Tomato powdery mildew

Scientific Name

Leveillula taurica. Other names are *Erysiphe taurica* and *Oidium sicula*. It exists as different strains. There are other powdery mildews affecting tomato. They are: *Oidium lycopersici* and *Oidium neolycopersici*.

AUTHORS Grahame Jackson & Eric McKenzie

Information from CABI (2016) *Leveillula taurica* (powdery mildew of cotton) Crop Protection Compendium (www.cabi.org/cpc). Photos 1&2 (taken by Eric McKenzie), and used in this fact sheet, appeared previously in McKenzie E (2013) *Leveillula taurica*. PaDIL - (<http://www.padil.gov.au>).

Produced with support from the Australian Centre for International Agricultural Research under project PC/2010/090: *Strengthening integrated crop management research in the Pacific Islands in support of sustainable intensification of high-value crop production*, implemented by the University of Queensland and the Secretariat of the Pacific Community.

This mini fact sheet is a part of the app *Pacific Pests, Pathogens & Weeds*

The mobile application is available from the Google Play Store and Apple iTunes.

