

## Banana black cross (071)

### Summary

- Restricted distribution. Asia, Africa, Oceania. On banana and plantains. Usually, a minor disease,
- Spots, scattered, sometimes in groups, black, like a 4-pointed star, up to 60 mm, with long axis parallel to the veins. Velvet-like mass of spores on underside.
- Spores spread in rain and wind. Worse under shade, or if infections become sites for *Cordana* spots.
- Cultural control: reduce shade or plant in open areas; resistant varieties (e.g., Cavendish, and some FHIA varieties).
- Chemical control: unlikely to be needed.

### Common Name

Banana black cross; back cross disease, tar spot

### Scientific Name

*Phyllachora musicola*

AUTHORS Helen Tsatsia & Grahame Jackson

Information from Liberato JR (2005) Black Cross Leaf Spot (*Phyllachora musicola*): PaDIL - <http://www.padil.gov>; and from CABI (2019) *Phyllachora musicola* (black cross disease of banana). Crop Protection Compendium. (<https://www.cabi.org/cpc/datasheet/40879>). Photo 1 Brian Thistleton, DPIF, Northern Territory Government, Australia.

Produced with support from the Australian Centre for International Agricultural Research under project PC/2010/090: *Strengthening integrated crop management research in the Pacific Islands in support of sustainable intensification of high-value crop production*, implemented by the University of Queensland and the Secretariat of the Pacific Community.

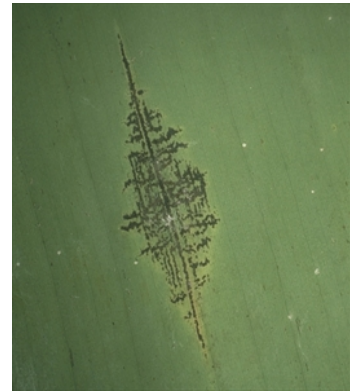


Photo 1. A single banana black cross spot, *Phyllachora musicola*, parallel to the veins of the leaf.

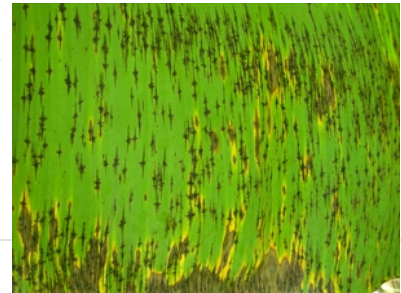


Photo 2. Dense infection of banana black cross, *Phyllachora musicola*.

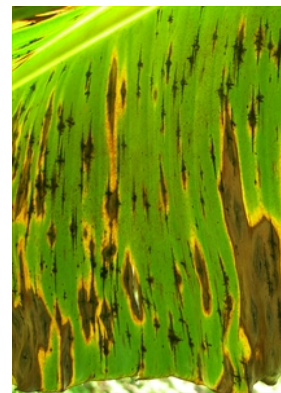


Photo 3. Spots of banana black cross, *Phyllachora musicola*, are entry points for *Cordana musae*.

Copyright © 2021. All rights reserved.



Australian Government  
Australian Centre for  
International Agricultural Research



Web edition hosted at <https://apps.lucidcentral.org/pppw>