

Banana rust (123)

Summary

- Narrow distribution. Malaysia, Philippines, Oceania. On banana and plantains. A minor fungal disease of banana.
- Dark streaks, mainly on older leaves, often with yellow halos, more common on the underside of leaves. The streaks are slightly raised and feel rough due to the spore masses of the rust.
- Serious when benomyl (now banned in most countries) used against black Sigatoka.
- Cultural control: none recommended.
- Chemical control: none recommended. Note that in commercial plantings, the rust would be controlled by fungicides used against black Sigatoka.

Common Name

Banana rust, banana leaf rust

Scientific Name

Uredo musae

AUTHOR Grahame Jackson

Photo 1 Gerlach WWP (1988) *Plant diseases of Western Samoa*. Samoan German Crop Protection Project. Deutsche Gesellschaft für Technische Zusammenarbeit (GTZ) GmbH, Germany. Photo 2 *Diseases of fruit crops in Australia* (2009). Editors, Tony Cooke, Denis Persley, Susan House. CSIRO Publishing.

Produced with support from the Australian Centre for International Agricultural Research under project PC/2010/090: *Strengthening integrated crop management research in the Pacific Islands in support of sustainable intensification of high-value crop production*, implemented by the University of Queensland and the Secretariat of the Pacific Community.

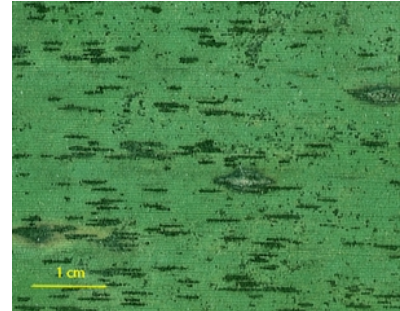


Photo 1. Dark brown to black streaks caused by the banana rust, *Uredo musae*. Often the streaks feel slightly rough due to the spore masses of the fungus.



Photo 2. The brown or black streaks of *Uredo musae*, are often surrounded by yellow margins. The streaks feel rough to the touch.

Copyright © 2021. All rights reserved.



Australian Government
Australian Centre for
International Agricultural Research



Web edition hosted at <https://apps.lucidcentral.org/pppw>