

# Pacific Pests, Pathogens and Weeds - Online edition

## Bean lace bug (253)

### Summary

- Widespread distribution (but not Africa). On beans, *bele*, breadfruit, eggplant, *Hibiscus*, and many other hosts. CABI lists soursoap and sweetpotato.
- Nymphs and adults use piercing mouthparts to feed on leaves causing large brown patches on beans, and white spots and whitish-yellow patches on eggplant. Brown faecal spots are present on the underside of leaves.
- Probably not of economic importance, except in dry weather, when natural enemies low.
- Natural enemies: parasitoid wasps, assassin bugs, lacewing larvae, ladybird beetles, pirate bugs, and more.
- Cultural control: create conditions for healthy growth - ensure adequate manures or fertilizer, and water.
- Chemical control: use soap, white or horticultural oils, or PDPs: neem, derris, chilli or pyrethrum. Alternatively, use synthetic pyrethroids, although they are likely to kill natural enemies.

### Common Name

Bean lace bug, cotton lace bug

### Scientific Name

*Corythucha gossypii*



Photo 1. Brown faecal spots, adults and nymphs of the bean lace bug, *Corythucha gossypii*, on eggplant.

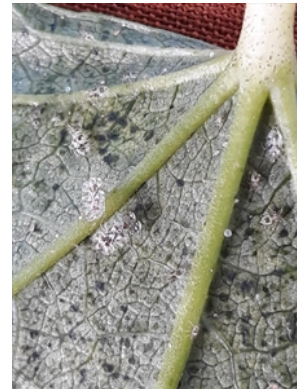


Photo 2. Adults and nymphs of the bean lace bug, *Corythucha gossypii*, on *bele*, *Abelmoschus manihot*.



Photo 4. Nymphs of the bean lace bug, *Corythucha gossypii*, on eggplant.



Photo 3. Leaves of eggplant showing white flecks, and also more serious yellow-white bleaching of older leaves due to feeding of bean lace bug, *Corythucha gossypii*.



Photo 5. Adults and nymphs of the bean lace bug, *Corythucha gossypii*, on dwarf bean.



Photo 6. Dark brown patch on the underside of a bean leaf due to feeding of the bean lace bug, *Corythucha gossypii*.



Photo 7. Uppersurface of Photo 4 to show the brown lesion caused by the bean lace bug, *Corythucha gossypii*.

---

AUTHOR Grahame Jackson

Information from *Corythucha gossypii* (2021). Wikipedia. ([https://en.wikipedia.org/wiki/Corythucha\\_gossypii](https://en.wikipedia.org/wiki/Corythucha_gossypii)); and from Belov V (2019) BugGuide. (<https://bugguide.net/node/view/1713682>).

Produced with support from the Australian Centre for International Agricultural Research under project PC/2010/090: *Strengthening integrated crop management research in the Pacific Islands in support of sustainable intensification of high-value crop production*, implemented by the University of Queensland and the Secretariat of the Pacific Community. Photo 3 Mike Furlong, University of Queensland, Brisbane.

---

Copyright © 2021. All rights reserved.



Australian Government  
Australian Centre for  
International Agricultural Research



Web edition hosted at <https://apps.lucidcentral.org/pppw>