

# Pacific Pests, Pathogens and Weeds - Online edition

## Mango seed weevil (353)

### Summary

- Widespread distribution: In Oceania, Australia, Fiji, French Polynesia, Guam, New Caledonia, Northern Mariana Islands, Tonga, and Wallis and Futuna. A brown, black or grey seed weevil.
- Eggs laid into slits on fruit, larvae burrow into flesh to find the seed, and later pupate. Fruits fall and after 2 months adults emerge.
- Spread occurs inside infested fruit. Survival in leaf litter and under bark or in seed.
- A damaging 'cosmetic' pest: (i) dark (egg-laying) marks on fruit, (ii) larvae/pupae and frass in seed.
- Natural enemies: weaver ant, *Oecophylla smaragdina*.
- Biosecurity: if weevil not present, use 'area freedom' - See FAO International Standards for Phytosanitary Measures.
- Cultural control: if weevil present, collect fallen fruit/seeds and destroy; ban fruit entering plantations; remove non-commercial trees or spray with insecticides.
- Chemical control: when egg-laying sites seen, spray canopy once or twice (October/November), and when adults emerge (February/March). In Australia, chlorpyrifos and methidathion are used.

### Common Name

Mango seed weevil, mango stone weevil, mango weevil

### Scientific Name

*Sternochetus mangiferae*; previously, *Cryptorhynchus mangiferae*.



Photo 1. Adult mango weevil, *Sternochetus mangiferae*.

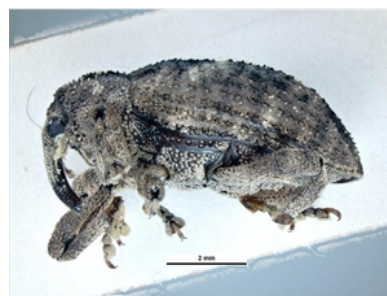


Photo 2. Mango seed weevil, *Sternochetus mangiferae*. Side view.



Photo 4. Pupa of the mango seed weevil, *Sternochetus mangiferae*, surrounded by frass.



Photo 3. Larva, pupa and adult (ventral view) of the mango seed weevil, *Sternochetus mangiferae*.



Photo 5. Close-up of Photo 3, showing pupa of the mango seed weevil, *Sternochetus mangiferae*, inside a mango seed.

AUTHOR Grahame Jackson & Mani Mua  
Information from <sup>1</sup>CABI *Sternochetus mangiferae* (mango seed weevil) (2017) Crop Protection Compendium. (<https://www.cabi.org/cpc/datasheet/16434>); and Woodruff RE, et al. (2014) Featured Creatures: Mango seed weevil. UF/IFAS, University of Florida. ([http://entnemdept.ufl.edu/creatures/fruit/beetles/mango\\_seed\\_weevil.htm](http://entnemdept.ufl.edu/creatures/fruit/beetles/mango_seed_weevil.htm)); and from DAF (2017) Mango seed weevil. Queensland Government. (<https://www.daf.qld.gov.au/business-priorities/agriculture/plants/fruit-vegetable/insect-pests/mango-seed-weevil>); and Chin D et al. (2010) Field guide to pests, beneficials, diseases and disorders of mangoes. Northern Territory Government, Department of Resources, Australia. ([https://dpir.nt.gov.au/\\_data/assets/pdf\\_file/0006/227832/mango\\_field\\_guide.pdf](https://dpir.nt.gov.au/_data/assets/pdf_file/0006/227832/mango_field_guide.pdf)). Photo 2 Ken Walker (2005) *Sternochetus mangiferae*. PaDIL - (<http://www.padil.gov.au>).

Produced with support from the Australian Centre for International Agricultural Research under project HORT/2016/185: Responding to emerging pest and disease threats to horticulture in the Pacific islands, implemented by the University of Queensland and the Secretariat of the Pacific Community.



Australian Government  
Australian Centre for  
International Agricultural Research



Web edition hosted at <https://apps.lucidcentral.org/pppw>