

Pacific Pests, Pathogens and Weeds - Online edition

Rats (035)

Summary

- Three types. Pacific rat (Asia and Pacific islands, small, nests on the ground); black rat (worldwide, often nests in trees) and brown rat (worldwide, mostly in human settlements; nests underground). Important pests.
- Attack cassava, cocoa, coconut, oil palm, peanut, maize, rice, sweetpotato, and others in storage; also, carry fleas with bacteria causing scrub typhus.
- Cultural control: do not leave food for rats to eat; aluminium bands around coconuts; snap-traps; cats.
- Chemical control: *Gliricidia* leaves (or *Barringtonia*, flesh of fish poison tree) mixed daily with e.g., cooked rice or root crops; alternatively, warfarin or brodifacoum in baits with coconut, wheat or maize (place in e.g., bamboo sections. Put out in evening and collected in mornings).

Common Name

Polynesian rot, black rat (also called ship rat), brown rat

Scientific Name

Rattus exulans (Pacific rat); *Rattus rattus* (black rat); *Rattus norvegicus* (brown rat).



Photo 1. Cocoa pods eaten by rats.



Photo 2. Polynesian rat, *Rattus exulans*.



Photo 4. Brown rat, *Rattus norvegicus*.



Photo 3. Black (or ship) rat, *Rattus rattus*.

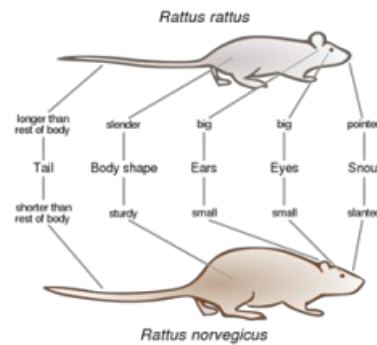


Diagram comparing the characteristics of black and brown rats.



Photo 5. An example of a snap trap.

Compendium. (<https://www.cabi.org/isc/datasheet/46829>). Photos 2&4 Gerald McCormack, Cook Islands Biodiversity & Natural Heritage (<http://cookislands.bishopmuseum.org/>). Photo 3 Black rat. Wikipedia. (http://en.wikipedia.org/wiki/Black_rat). Diagram [Vergleich_Hausratte_Wanderratte_DE.svg](#), based on the work by Karim-Pierre Maale. (https://commons.wikimedia.org/wiki/File:Comparison_Black_Rat_Brown_Rat_EN.svg). Photo 5 Snap trap. (<http://www.easypestsupplies.com.au/rat-snap-trap-x-5.html?gclid=CNL6t4OV9L4CFdd6vQod2k8Ayg>).

Produced with support from the Australian Centre for International Agricultural Research under project PC/2010/090: *Strengthening integrated crop management research in the Pacific Islands in support of sustainable intensification of high-value crop production*, implemented by the University of Queensland and the Secretariat of the Pacific Community.

Copyright © 2021. All rights reserved.



Australian Government
Australian Centre for
International Agricultural Research



Web edition hosted at <https://apps.lucidcentral.org/pppw>