

## Sugarcane whitefly (245)

### Summary

- Widespread distribution. Asia, Africa, Oceania. On sugarcane, bamboo, sorghum and grasses. A minor pest.
- Light green egg masses on undersides of leaves; oval brown nymphs; adults with black bands on wings. Produce honeydew; ants often present attracted to the honeydew excreta.
- Biocontrol: several tiny wasps, and ladybird beetles; but natural enemies need ant removal to be effective.
- Cultural control: destroy ant colonies with hot water.
- Chemical control: use soap, white or horticultural oils. Use synthetic pyrethroids to kill ants.

### Common Name

Sugarcane whitefly

### Scientific Name

*Neomaskellia bergii*

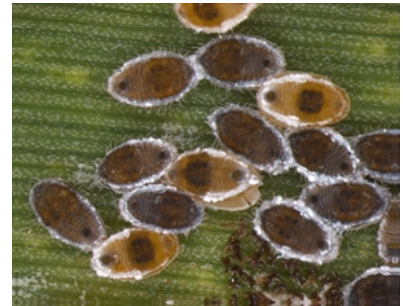


Photo 1. Late stage nymphs and pupae of the sugarcane whitefly, *Neomaskellia bergii*.



Photo 2. Close-up of adult sugarcane whitefly, *Neomaskellia bergii*.



Photo 4. Adult sugarcane whiteflies, *Neomaskellia bergii*, attended by ants.



Photo 3. Eggs and adults of the sugarcane whitefly, *Neomaskellia bergii*.

AUTHOR Grahame Jackson  
Information from Evans GA (2007) The whiteflies (Hemiptera: Aleyrodidae) of the world and the host plants and natural enemies USDA/APHIS. Version 070606.  
Photos 1-3 National Bureau of Agricultural Insect Resources, ICAR, India.

Produced with support from the Australian Centre for International Agricultural Research under project PC/2010/090: *Strengthening integrated crop management research in the Pacific Islands in support of sustainable intensification of high-value crop production*, implemented by the University of Queensland and the Secretariat of the Pacific Community.

Copyright © 2021. All rights reserved.



Australian Government  
Australian Centre for  
International Agricultural Research



Web edition hosted at <https://apps.lucidcentral.org/pppw>