

Sweetpotato leaf spot (208)

Summary

- Widespread distribution. Asia, Africa, Caribbean, Oceania. On sweetpotato and wild relatives. A minor disease.
- Brown spots, round to irregular, sometimes with light brown centres, on the upper surface, brown or grey below. Sometimes merge.
- Spores on lower surface spread in wind.
- Cultural control: spots on older leaves so unlikely to affect yields of storage roots.
- Chemical control: none recommended.

Common Name

Sweetpotato leaf spot

Scientific Name

Pseudocercospora timorensis

AUTHOR Grahame Jackson
Information (and Photo 1) Kohler F, et al. (1997) Diseases of cultivated crops in Pacific Island countries. South Pacific Commission. Pirie Printers Pty Limited, Canberra, Australia.

Produced with support from the Australian Centre for International Agricultural Research under project PC/2010/090: Strengthening integrated crop management research in the Pacific Islands in support of sustainable intensification of high-value crop production, implemented by the University of Queensland and the Secretariat of the Pacific Community.



Photo 1. Sweetpotato leaves with leaf spots caused by *Pseudocercospora timorensis*.

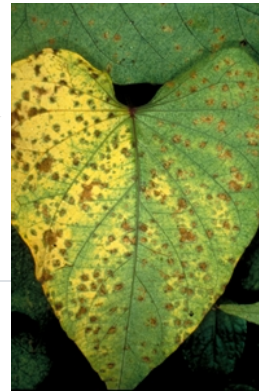


Photo 2. Older leaf of sweetpotato with spots caused by *Pseudocercospora timorensis*.

Copyright © 2021. All rights reserved.



Australian Government
Australian Centre for
International Agricultural Research



Web edition hosted at <https://apps.lucidcentral.org/pppw>