

Sweetpotato red leaf beetle (053)

Summary

- Narrow distribution. In parts of Oceania. On sweetpotato, kangkong, and other *Ipomoea* species.
- Eggs on underside of leaves, grubs feed on roots, and after pupation, adults (6 mm) emerge. If many, swarms may occur.
- Holes made in the leaves as the beetles feed. Young plants slow to grow, but effect on yield unknown. •
- Cultural control: do not plant new crops next to old infested ones; apply mulches, manures, fertilizer, water for rapid early growth; handpick early in day; collect and burn trash after harvest.
- Chemical control: PDPs: ash (or ash+lime in water), derris, pyrethrum, or chilli; or synthetic pyrethroids.

Common Name

Sweetpotato red leaf beetle, red sweetpotato beetle

Scientific Name

Candezea (Monolepta) species. There has been a recent revision of the genus, so previous records are now in doubt. However, *Candezea palustris* has been recorded from Solomon Islands.



Photo 1. Sweetpotato red leaf beetle, *Candezea palustris*.



Photo 2. Leaves eaten by sweetpotato red leaf beetle, *Candezea palustris*.



Photo 4. Leaves eaten by sweetpotato red leaf beetle, *Candezea palustris*.

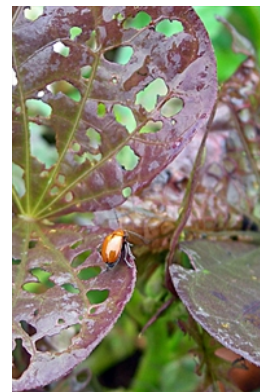


Photo 3. Only the veins remain on many leaves damaged by the sweetpotato red leaf beetle, *Candezea palustris*.



Photo 5. Severe damage on young sweetpotato by sweetpotato red leaf beetle, *Candezea palustris*.

AUTHORS Helen Tsatsia & Grahame Jackson

Information from Chris Reid (pers.comm.), Australian Museum, Sydney; and Business Queensland (2019) Leaf beetles in field crops. Queensland Government. (<https://www.business.qld.gov.au/industries/farms-fishing-forestry/agriculture/crop-growing/pests-field-crops/leaf-beetles>); and from DAF (2017) Red-shouldered leaf beetle. Queensland Government. (<https://www.daf.qld.gov.au/business-priorities/agriculture/plants/fruit-vegetable/insect-pests/red-shouldered-leaf-beetle>).

Produced with support from the Australian Centre for International Agricultural Research under project PC/2010/090: *Strengthening integrated crop management research in the Pacific Islands in support of sustainable intensification of high-value crop production*, implemented by the University of Queensland and the Secretariat of the Pacific Community.



Australian Government
Australian Centre for
International Agricultural Research



Web edition hosted at <https://apps.lucidcentral.org/pppw>