

Tomato catface (420)

Summary

- Worldwide. Physiological disorder common wherever tomatoes are grown. A general term for lumps, outgrowths, holes and scar tissue on fruits. The fruits are still edible; they are just unsightly, and unsaleable.
- Varieties differ in susceptibility, with those producing larger fruit more likely to show symptoms.
 - Cause not understood. Several suggestions: initial dry period then long period of rain; alternating dry and wet soils; cold temperatures ($<10^{\circ}\text{C}$) at night during flowering; large fluctuations in day and night temperatures; excessive N; thrips damaging female parts of flower; excessive pruning indeterminate varieties (lowering auxin concentrations); use of 2,4-D herbicide.
- Cultural control: avoid excessive pruning; do not apply excessive N; avoid planting in seasons when low temperature ($<10^{\circ}\text{C}$) expected; avoid extremes of wet and dry; use varieties that are less susceptible; use a mulch.

Common Name

Tomato catface

Scientific Name

None; a physiological disorder.



Photo 1. A mix of ripe and unripe fruits showing varying catface symptoms,



Photo 2. Catface symptom at the blossom end. Note the small outgrowth and the scar tissue.



Photo 4. Extreme symptoms of catface deformation and scarring.

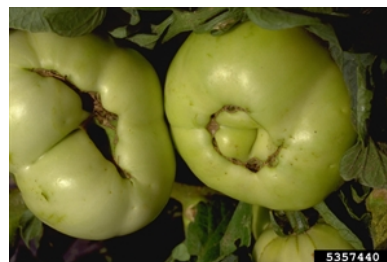


Photo 3. Catface symptoms showing, cracks, cavities and outgrowths.

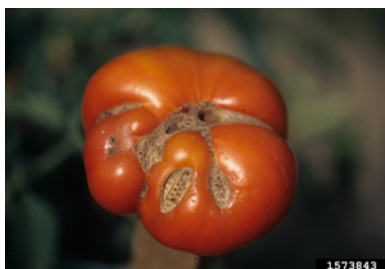


Photo 5. Catface on a ripe tomato fruit.

AUTHOR Grahame Jackson

Information from tomato, cat facing. University of Massachusetts Amherst. (<https://ag.umass.edu/vegetable/fact-sheets/tomato-cat-facing>); and from Tomato diseases (undated) Catface. UF/IFAS. University of Florida. Photo 1. Union Square Green Market (https://www.instagram.com/p/BIVuBCKhDf/?utm_source=ig_embed). Photos 2,4&5 Gerald Holmes, California Polytechnic State University at San Luis Obispo. Photo 3 M.E. Bartolo, Bugwood.org.

Produced with support from the Australian Centre for International Agricultural Research under project HORT/2016/185: *Responding to emerging pest and disease threats to horticulture in the Pacific islands*, implemented by the University of Queensland and the Secretariat of the Pacific Community.

Copyright © 2021. All rights reserved.



Australian Government
Australian Centre for
International Agricultural Research



Web edition hosted at <https://apps.lucidcentral.org/pppw>

