

Celery early blight (136)

Summary

- Widespread distribution. North and South America, Asia, Oceania. A damaging fungal disease.
- First, on older, outer, leaves - yellow spots with grey centres, up to 12mm diam., developing into a blight. Later, on the stalks.
- Spread by rain splash, on wind and on seed. Survival in crop debris and seed.
- Cultural control: seed treatment: hot water (48°C for 30 min), but only treat seed <3 years' old; in nursery, use pasteurised or soilless mixes; use wide spacing and raised beds to improve air circulation in field; use drip not overhead irrigation; plough in remains at harvest, or collect and burn.
- Chemical control: seed - thiram; field – chlorothalonil, mancozeb, copper; or those in strobilurin, DMI (demethylation inhibitor) groups of fungicides, alternating with the first any of the first three.

Common Name

Celery early blight

Scientific Name

Cercospora apii



Photo 1. Irregular-shaped spots, brown with grey centres, occur on the leaves, and in wet weather develop into a blight.

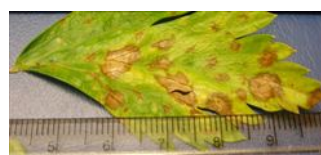


Photo 2. Irregular-shaped spots, brown with grey centres, some enlarging and joining together.



Photo 4. The individual spots of *Cercospora apii* have joined together to form a blight which is destroying the leaves.



Photo 3. The spots of *Cercospora apii* occur on all the leaves and do considerable damage.

AUTHOR Grahame Jackson

Information (and Photo 1) from *Diseases of vegetable crops in Australia* (2010). Editors, Denis Persley, et al. CSIRO Publishing; and from Gerlach WWP (1988) *Plant diseases of Western Samoa*. Samoan German Crop Protection Project, Deutsche Gesellschaft für Technische Zusammenarbeit (GTZ) GmbH, Germany, and CABI (2019) *Cercospora apii* (early blight: celery). Crop Protection Compendium. (<https://www.cabi.org/cpc/datasheet/12185>); and Chapat J (2000) Identification and management of celery leaf blights. Ministry of Agriculture, Food and Rural Affairs. Ontario. (<http://www.omafra.gov.on.ca/english/crops/facts/00-093.htm>); and from Kolke ST, et al. (2008) Celery Early blight. University of California Statewide IPM Program. Agriculture and Natural Resources, University of California. (<http://ipm.ucanr.edu/PMG/r104100211.html>). Photo 2&3 Jacquie (Wright) Kami, formerly Plant Pathologist, Secretariat of the Pacific Community, Suva, Fiji.

Produced with support from the Australian Centre for International Agricultural Research under project PC/2010/090: *Strengthening integrated crop management research in the Pacific Islands in support of sustainable intensification of high-value crop production*, implemented by the University of Queensland and the Secretariat of the Pacific Community.

Copyright © 2022. All rights reserved.



Australian Government
Australian Centre for
International Agricultural Research



Web edition hosted at <https://apps.lucidcentral.org/pppw>