

Coconut seedling blight (075)

Summary

- Widespread distribution. Southeast Asia, Caribbean, Oceania. On coconuts. An important disease of seedlings.
- The fungus attacks well-maintained seedlings, but is worse on those in crowded nurseries with poor nutrition and dense shade.
- Spots merge causing a serious blight and leaves dry up and die early. Spread of spores occurs in wind and rain. It is unimportant after transfer of seedlings to the field.
- Cultural control: ensure correct nutrition: the balance between N (too much increases blight) and K is important; space plants allowing good air circulation so wet leaves dry rapidly; shade should be low or absent.
- Chemical control: Unlikely to be needed; if required use copper, mancozeb or chlorothalonil.

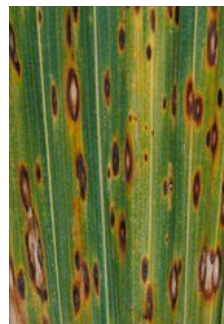


Photo 1. Small oval brown leaf spots of coconut seedling blight, *Bipolaris incurvata*.



Photo 2. Spots of coconut seedling blight, *Bipolaris incurvata*, joining together and causing a blight.

Common Name

Coconut seedling blight

Scientific Name

Bipolaris incurvata (previously known as *Drechslera incurvata*, *Helminthosporium incurvatum*). Another species, *Bipolaris setariae* (*Cochliobolus setariae*) was identified causing a leaf spot in nursery gardens in Hainan Province, China, in 2012.

AUTHORS Helen Tsatsia & Grahame Jackson

Information from CABI (2019) *Bipolaris incurvata* (coconut leaf spot). Crop Protection Compendium. (<https://www.cabi.org/cpc/datasheet/19827>); and McKenzie, E.

(2013) *Bipolaris incurvata*: PaDIL - <http://www.padil.gov.au>; and from Uchida JY (undated)

Bipolaris incurvata. Crop Knowledge Master. University of Hawai'i at Manoa.

(<http://www.extento.hawaii.edu/kbase/default.htm>). Photo 1&2 Kohler F, *et al.* (1997) *Diseases of cultivated crops in Pacific Island countries*. South Pacific Commission. Pirie Printers Pty Limited, Canberra, Australia.

Produced with support from the Australian Centre for International Agricultural Research under project PC/2010/090: *Strengthening integrated crop management research in the Pacific Islands in support of sustainable intensification of high-value crop production*, implemented by the University of Queensland and the Secretariat of the Pacific Community.

Copyright © 2022. All rights reserved.



Australian Government
Australian Centre for
International Agricultural Research



Web edition hosted at <https://apps.lucidcentral.org/pppw>