

## Cowpea aphid (356)

### Summary

- Worldwide distribution. Common among Pacific island countries on food legumes.
- Nymphs slate grey, adults shiny brown or black. In tropics, young born alive. Overcrowding produces winged adults. Spread on the wing and on wind currents.
- Damage severe if infestations early: (i) directly by sap-sucking adults and nymphs damaging shoots, pods and causing stunting (toxins are produced) or wilting, or (ii) indirectly spreading (more than 30) viruses and production of honeydew attracting sooty moulds.
- Natural enemies: ladybird beetles, lacewings, hoverflies; parasitoid wasps, e.g., *Trioxys indicus*.
- Cultural control: avoid planting next to, or down-wind from infested crops; weed (especially wild legume hosts); remove infested leaves; destroy ant colonies with boiling water (or insecticides); collect and destroy debris after harvest.
- Chemical control: (i) PDPs (derris, chilli, garlic, neem, pyrethrum); (ii) soap solution, horticultural or white oils (**see Fact Sheet no. 56**). Preserve natural enemies, avoid broad-spectrum insecticides. Only use e.g., synthetic pyrethroids to kill ants.

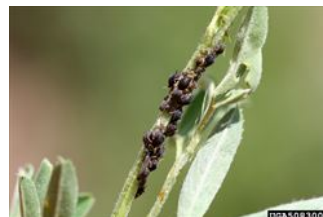


Photo 1. Colonies of the cowpea aphid, *Aphis craccivora*.

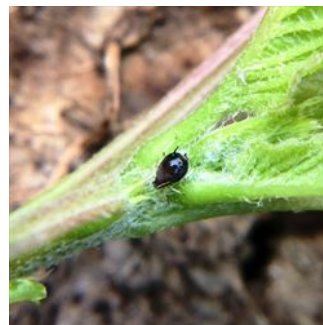


Photo 2. Adult cowpea aphid, *Aphis craccivora*.

### Common Name

Cowpea aphid, groundnut aphid, bean aphid, black legume aphid.

### Scientific Name

*Aphis craccivora*

AUTHOR Grahame Jackson

Information from CABI *Aphis craccivora* (groundnut aphid) (2017) Crop Protection Compendium. (<https://www.cabi.org/cpc/datasheet/6192>); and *Aphis craccivora* Wikipedia. ([https://en.wikipedia.org/wiki/Aphis\\_craccivora](https://en.wikipedia.org/wiki/Aphis_craccivora)); and from Godfrey LD, et al. (2017) Alfalfa Cowpea Aphid UC/IPM. Agriculture & Natural Resources, University of California. (<http://ipm.ucanr.edu/PMG/r1301511.html>). Photo1 Manil Mua, SPC, Sigatoka Research Station, Fiji. Photo 2 Whitney Cranshaw, Colorado State University, Bugwood.org.

Produced with support from the Australian Centre for International Agricultural Research under project HORT/2016/185: *Responding to emerging pest and disease threats to horticulture in the Pacific islands*, implemented by the University of Queensland and the Secretariat of the Pacific Community.

Copyright © 2022. All rights reserved.



Australian Government  
Australian Centre for  
International Agricultural Research



Web edition hosted at <https://apps.lucidcentral.org/pppw>