

Fig rust (307)

Summary

- Widespread distribution. On figs (*Ficus* species), but also breadfruit. When severe, causes defoliation and young fruit fail to ripen.
- Yellow spots on top of leaves, raised pustules below, reddish-brown, circular, 0.5 mm diameter. Spots may merge, and leaves may fall. Sometimes spots on fruit.
- Spread by spore splash from one leaf to another, or between plants; over long distances, by wind.
- Cultural control: prune to improve air movement, and drying of leaves; avoid overhead irrigation; avoid planting under shade; weed; avoid areas that flood or where there is free-standing water; provide adequate nutrition; test varieties (e.g., breadfruit).
- Chemical control: use copper or mancozeb.

Common Name

Fig rust

Scientific Name

Cerotelium fici; previously known as *Kuehneola fici*, and *Uredo fici*.



Photo 1. Pustules on the underside of a breadfruit leaf, caused by fig rust, *Cerotelium fici*.

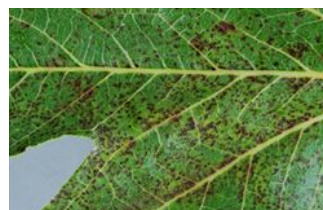


Photo 2. Top surface of a breadfruit leaf showing dark angular spots caused by the fig rust, *Cerotelium fici*.



Photo 4. Fig tree infected by the fig rust fungus, *Cerotelium fici*, causing premature leaf fall.



Photo 3. Fig tree partly defoliated by the fig rust fungus, *Cerotelium fici*.

AUTHORS Grahame Jackson & Eric McKenzie

Information from Verga A, Nelson S (2014) *Fig rust in Hawai'i*. College of Tropical Agriculture and Human Resources, University of Hawai'i at Manoa, Honolulu. (<https://www.ctahr.hawaii.edu/oc/freepubs/pdf/PD-100.pdf>). Photos 1-4 (taken by Eric McKenzie), and used in this fact sheet, appeared previously in McKenzie E (2013) *Cerotelium fici* PaDIL - (<http://www.padil.gov.au>).

Produced with support from the Australian Centre for International Agricultural Research under project PC/2010/090: *Strengthening integrated crop management research in the Pacific Islands in support of sustainable intensification of high-value crop production*, implemented by the University of Queensland and the Secretariat of the Pacific Community.

Copyright © 2022. All rights reserved.



Australian Government
Australian Centre for
International Agricultural Research



Web edition hosted at <https://apps.lucidcentral.org/pppw>