

## Rice seed bug (299)

### Summary

- Widespread distribution. Asia, Central America, Oceania. On rice and grasses. An important pest.
- Egg laid on the midribs of leaves, nymphs like adults, but wingless. Adults 15 mm, brown, white underneath, narrow.
- Contents of seed sucked out when still soft, becoming shrivelled and small.
- Natural enemies: wasp parasitoids.
- Cultural control: weed within and around fields; avoid overlapping crops; in small plots, sweep to catch bugs (morning and evening); burn grass on bunds and around fields after harvest.
- Chemical control: synthetic pyrethroids, but will kill natural enemies.

### Common Name

Rice seed bug, rice bug, rice earhead bug

### Scientific Name

*Leptocorisa acuta*. Note, there is a related species, *Leptocorisa oratorius*, but research in Indonesia concluded that the loss due to the pest was minimal.

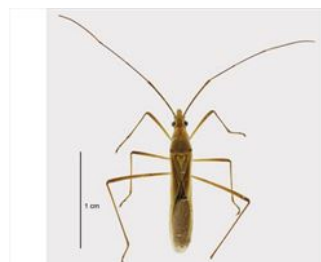


Photo 1. Adult rice seed bug, *Leptocorisa acuta*.



Photo 2. Adult rice seed bug, *Leptocorisa acuta*, side view.

AUTHOR Grahame Jackson

<sup>1</sup>International Rice Research Institute, Philippines. Information from Catindig J (undated) Rice bug. Rice Knowledge Bank. IRRI (<http://www.knowledgebank.irri.org/training/fact-sheets/pest-management/insects/item/rice-bug>); and from Serrano AC, et al (2014) Featured Creatures: Rice bug, UF/IFAS, University of Florida. ([http://entnemdept.ufl.edu/creatures/field/Leptocorisa\\_acuta.htm](http://entnemdept.ufl.edu/creatures/field/Leptocorisa_acuta.htm)). Photos 1 & 2. Rhode BF, Crosby TK (2013) Rice Bug (*Leptocorisa acuta*). PaDIL - (<http://www.padil.gov.au>).

Produced with support from the Australian Centre for International Agricultural Research under project PC/2010/090: *Strengthening integrated crop management research in the Pacific Islands in support of sustainable intensification of high-value crop production*, implemented by the University of Queensland and the Secretariat of the Pacific Community.

Copyright © 2022. All rights reserved.



Australian Government  
Australian Centre for  
International Agricultural Research



Web edition hosted at <https://apps.lucidcentral.org/pppw>