

Sugarcane eye spot (305)

Summary

- Widespread distribution. On sugarcane, and related grass weeds. A minor fungal disease of commercial sugarcane varieties.
- Seedling blights, and spots on the leaves (eyespot) parallel to the veins, oval, 12 mm long x 6 mm wide, reddish with pale yellow halo. Reddish-brown to yellow streaks above the eyespots, called 'runners' caused by toxins.
- Spread is by spores produced in the eyespots blown in wind and rain.
- Cultural control: varietal control is the only recommendation.
- Chemical control: fungicides are not recommended.

Common Name

Sugarcane eye spot

Scientific Name

Bipolaris sacchari. Previous names are *Cercospora sacchari*, *Drechslera sacchari* and *Helminthosporium sacchari*.

AUTHORS Grahame Jackson & Eric McKenzie
Information (and Photo 3) from Philippe Rott, et al. *Sugarcane eyespot disease*. University of Florida, IFAS Extension (<http://edis.ifas.ufl.edu/sc003>), and from Diseases of Australian sugarcane: Field guide. BSES Limited, Australia. (<https://sugarresearch.com.au/wp-content/uploads/2017/03/Diseases-of-Australian-Sugarcane-Field-Guide.pdf>). Photo 1 MS Irey *Diseases, pests, and nonnutritive disorders of sugarcane*. The American Phytopathological Society. Photo 2 (taken by Eric McKenzie), and used in this fact sheet, appeared previously in McKenzie E (2013) *Bipolaris sacchari*. PaDL - (<http://www.pddl.gov.au>).

Produced with support from the Australian Centre for International Agricultural Research under project PC/2010/090: *Strengthening integrated crop management research in the Pacific Islands in support of sustainable intensification of high-value crop production*, implemented by the University of Queensland and the Secretariat of the Pacific Community.



Photo 1. Reddish-brown elliptical spots with yellow margins, caused by the sugarcane eyespot fungus, *Bipolaris sacchari*. Notice the yellow 'runners' associated with the spots (see text).

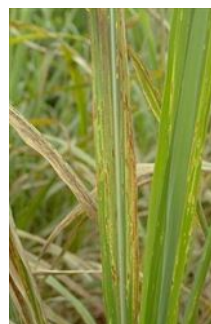


Photo 2. Merging spots of sugarcane eyespot, *Bipolaris sacchari*.



Photo 3. Sugarcane eye spot lesions. *Bipolaris sacchari*, on sugarcane.

Copyright © 2022. All rights reserved.



Australian Government
Australian Centre for
International Agricultural Research



Web edition hosted at <https://apps.lucidcentral.org/pppw>