

Manumanu Meca Ni Draunikau (110)

Kena I Vakamacala

- E kune e vuravura taucoko. E vica tiko na kena veimataqali, ka ra dau vakacacana na kiukaba, bean, tomato, kaveti kei na so tale na i tei ka ra vuvale vata kei na senikau. E dau vakacaca na banuve ka dau vuki me lago.
- E dau vakalutu yaloka e na loma ni draunikau, ka dau kana ena loma ni draunikau na banuve. Na lago e domica talega na sena.
- **Tabana ni Tataqomaki (Biosecurity):** E so na kena mataqali e kune ga ena so na matanitu.
- **Manumanu Yaga (Natural enemies):** E tiko e levu na manumanu veivuke ka rawa ni valuta na manumanu meca.
- **Tataqomaki Taumada (Cultural control):** Me samaki na co ca ni dau vakarururga na manumanu meca; me soqoni ka vakarusai na benu ni oti na tatamusuki.
- **Wainimate ni Tatarovi (Chemical control):** Bt (*Bacillus thuringiensis*), spinosad, abamectin se na cyromazine; wainimate me vaka na pyrethroid sa sega ni cakacaka tiko ni sa vakayagataki duaduaga vakawasoma.

Common name: Leafminers – General. (See also Fact sheets 259, 262 and 377).

Scientific name: *Liriomyza* species. *Liriomyza sativae* (vegetable leafminer); *Liriomyza trifolii* (chrysanthemum leafminer or American serpentine leafminer), *Liriomyza huidobrensis* (serpentine leafminer); *Liriomyza brassicae* (cabbage or serpentine leafminer).



Photo 1. Adult vegetable leafminer, *Liriomyza sativae* (side view). The adults feed on sap from leaves and nectar.



Photo 2. Adult chrysanthemum leafminer, *Liriomyza trifolii* (side view).



Photo 4. Cabbage leafminer, *Liriomyza brassicae* (side view).

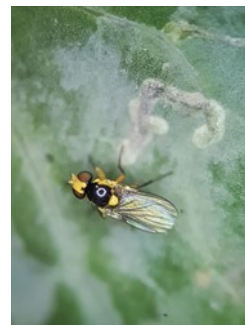


Photo 3. Cabbage leafminer, *Liriomyza brassicae* (from above).



Photo 5. Characteristic patterns of damage on tomato made by the larvae or maggots of a *Liriomyza* leafminer feeding just under the surface layer of the leaves.



Photo 6. Cabbage leafminer, *Liriomyza brassicae*, mines on *Nasturtium*.



Photo 7. Close-up of Photo 3, showing the mines of cabbage leafminer, *Liriomyza brassicae*.

Copyright © 2023. All rights reserved.



Australian Government
Australian Centre for
International Agricultural Research



Web edition hosted at <https://apps.lucidcentral.org/pppw>