



Photo 6. Adult sweetpotato weevil, *Cylas formicarius*, caught in a sticky trap.

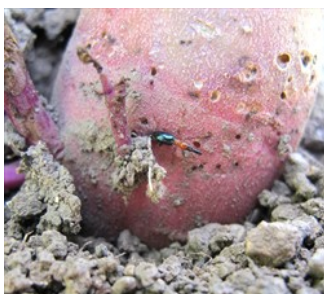


Photo 7. Sweetpotato weevil, *Cylas formicarius*, on the outside of a storage root left on the soil. Note the small feeding pits made by the weevil.



Photo 8. A pheromone trap attracting large numbers of male sweetpotato weevils, *Cylas formicarius*. Note the trap is a plastic bottle with the top 1/3 cut off and inverted. The pheromone has been absorbed onto rubber tubing which is held in place by wire.

Copyright © 2023. All rights reserved.



Australian Government
Australian Centre for
International Agricultural Research



Web edition hosted at <https://apps.lucidcentral.org/pppw>