

Iniseti faalafua o le fai (Banana weevil) (109)

Aotelega

- Molimau i le lalolagi atoa. I ituaiga fa'I eseese. O le iniseti lenei (weevil) e nofo i totonu o le ogafai ma ma'i ai pe pala, ai foi. E iu ina laiti ai fua o aufai ma vaivai lau ma e faigofie ona aafia I le matagi ma pauu I lalo. O auga e pei o le 'toppling' pe fetiitii lau o fai, e mafua mai le isi foi iniseti e nofo I le palapala (nematodes).
- Fa'atatau I le faitau aofa'i o nei iniseti pe tusa o le 10 cm mafiafia o le ogafai e 20 i le ha; a togafiti pe a >4 iniseti i le ogafai ile 5 aso.
- **Togafitiga fa'aleaganu'u:** totō na'o fai e leai ni iniseti o iai e iloa lea I le siaki o totonu o ogafai pe iai ni iniseti pe leai >3 masina ona faatoa le fanua a'o le'i toe toto; e mafai ona vai vevela le palapala mo iniseti o le palapala (nematode) (53°C mo le 20 min.) o le a fa'atamaia ai nei iniseti, a pa'u lalo fai, ia vave ona tipi le ogafai ina ia vave mago.
- **Faaagaina o vaila'au:** faaoga le lisi o vailaau ua taua (chlorpyrifos, fipronil, bifenthrin, imidacloprid) ma o latou fua o loo pipii I le label. E maua foi le isi ituaiga togafitiga e pei o le mailei (pheromone) mo le pu'eina o nei iniseti.

Igoa masani: Iniseti Faalafua e nofo i le ogafai.

Igoa Faasaienisi: *Cosmopolites sordidus*.



Photo 4. Adult banana weevil, *Cosmopolites sordidus*.



Photo 1. Poor growth of bananas with extensive tunnelling in the corm (see Photos 2&3).



Photo 2. Banana corm cut vertically to show tunnelling by banana weevil, *Cosmopolites sordidus*, (from Photo 1).

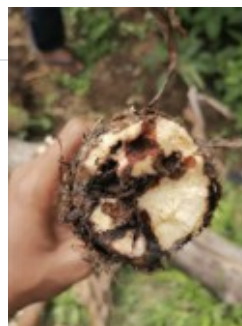


Photo 3. Banana corm cut transversely to show tunnelling by banana weevil, *Cosmopolites sordidus* (from Photo 1).

Copyright © 2023. All rights reserved.



Australian Government
Australian Centre for
International Agricultural Research



Web edition hosted at <https://apps.lucidcentral.org/pppw>