

Pepe faatuataimane (Diamondback moth) (020)

Aotelega

- Salalau i le lalolagi atoa. Anufe e faatamaia au aiga o le kapisi (brassica), fa'ata'ita'iga, kapisi ulu lapotopoto, kapisi Saina, latisi, kapisi faiulu meamata ma le kapisi faiulu pa'epa'e, ma le kapisi vai. O se fa'ama'i taua.
- O fuamoa e sasama, e tautuufua ta'itasi. O anufe nini'i e aina ma ulufia lau; o anufe lapopo'a e faapupu lau. Afai e pa'i i ai, e o solomuli ma pauu lalo ma faataupe l filo silika.
- O filii faanatura: parasitoids, *Cotesia* (silasila i le **Pepe Faamatalaga Nu. 287**) ma le *Diadegma* (tagai i le **Pepe Faamatalaga Nu. 285**).
- **Metotia fa'ale-aganu'u**: asiasi i taimi uma fa'amiliga ma mea totō; ao ese anufe mai lau; toto fuala'au mailei, fa'ata'ita'iga, sinapi po'o kapisi Saina (Bok Choy), ae fa'atamaia le mailei a'o le'i fofoa fuamoa.
- **Puleaina o vaila'au**: i totonu o fale, PDPs (chillies, neem, derris, pyrethrum e puipuia ai filii masani); i fanua faapisinisi, ola i lalo o upega; fa'aoga le Bt (*Bacillus thuringiensis*) fa'afefete i anufe a'o laiti. Aloese mai pyrethroids ma organophosphates.

Igoa masani: Pepe Faatuataimane.

Igoa Faasaienisi: *Plutella xylostella*.



Photo 1. Young caterpillars of diamondback moth, *Plutella xylostella*, eat from the underside of the leaf to the top layer of wax.



Photo 2. Holes in a cabbage leaf caused by larvae of diamondback moth, *Plutella xylostella*.



Photo 4. Pupae of diamondback moth, *Plutella xylostella*, surrounded by their net-like cocoons on the underside of a Chinese cabbage leaf.



Photo 3. Holes in the leaves of cabbage seedlings caused by larvae of diamondback moth, *Plutella xylostella*.



Photo 5. Adult diamondback moth, *Plutella xylostella*, showing the characteristic wing patterns.

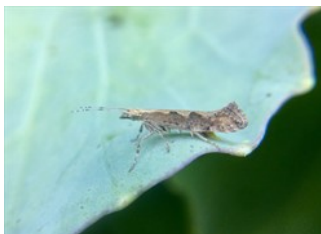


Photo 6. Adult diamondback moth, *Plutella xylostella*.

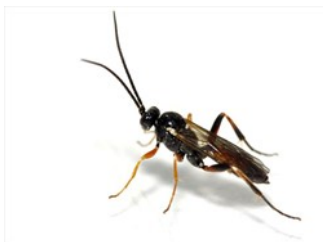


Photo 7. Adult *Cotesia vestalis*.



Photo 8. *Cotesia vestalis* inside its silken cocoon, close to the remains of a dead diamondback moth larva.



Photo 9. Adult *Diadegma semiclausum* laying egg in larva of diamondback moth, *Plutella xylostella*.



Photo 10. Pupa of diamondback moth, *Plutella xylostella*, parasitised by *Diadegma semiclausum*.

Copyright © 2023. All rights reserved.



Australian Government
Australian Centre for
International Agricultural Research



Web edition hosted at <https://apps.lucidcentral.org/pppw>